


2021-2022 Annual Report

ORCHESTRATING PROGRESS TOGETHER



By the Numbers


450,000 supporters

 50+ states with active volunteers, (plus D.C., Guam and Puerto Rico)

 8,931 volunteers across the country

 71,362 active donors

>\$23mil annual revenue

 ~100 employees



MESSAGE FROM THE PRESIDENT AND CEO

Throughout my life, one of my greatest passions has been music, both playing in orchestras and performing in musical theater. It was inspiring to be a part of something larger than myself. Magical to watch a group of individuals come together, practice, make mistakes, learn, grow, and eventually after many months — and a tremendous amount of hard work and grit — take the stage.

Rarely was a performance flawless. However, almost always, the final effort was a demonstration that hard work results in meaningful progress. And sometimes the result was nothing short of magical.

After a performance, I had a ritual. One day to celebrate and revel in the progress, then back to the practice room. The performance was never the end; it was simply a milestone along the journey of my commitment to create awe-inspiring music.

Given this, I was delighted when our team brought forward the proposed theme for this year's annual report: "Orchestrating Progress Together." Like a conductor, Compassion & Choices has an overall vision for where we want to go and how we will get there. However, realizing that vision (like creating awe-inspiring music) requires the skillful leadership and involvement of many players: staff, donors, volunteers, supporters, organizational partners and many more. If one person plays the wrong note, our performance may waver. However, when we all come together and do our part, we can make beautiful music.

This report represents our "performance": that moment when we present the culmination of all our efforts over the past year to the world. This year, together, we created awe-inspiring — or in our case, life-changing — music. I invite you to review the pages that follow and revel in our symphony of accomplishments.

As is the case with any performance, this report is simply a stop along the way. Today, we can celebrate and take pride in our collective accomplishments. Tomorrow: join me back in the practice room. Through our collective efforts, we are creating a world where patients have a greater voice and choice in the kind of end-of-life care they receive.

Gratefully,

Kim Callinan

Kim Callinan



LEGAL ADVOCACY

Compassion & Choices is the only national organization with a legal program devoted to protecting and expanding end-of-life choice and care. In the past year alone, we played a key role in multiple legal victories that protected or advanced medical decision-making at life's end: three cases where we were plaintiffs or intervenors, and two where we contributed to the outcome as an amicus curiae ("friend of the court").

A Success Story: Making the Oregon Law More Accessible

In 2021, Compassion & Choices filed a lawsuit in federal court, *Gideonse v. Brown, et al.*, on behalf of Dr. Nicholas Gideonse. The case challenged the constitutionality of the residency restriction contained in Oregon's Death With Dignity Act. Dr. Gideonse regularly treats patients from neighboring Washington state, but medical aid in dying was the only type of care he was unable to provide to these patients. The residency restriction required these patients to either find a new doctor during the dying process or forgo medical aid in dying. Compassion & Choices argued that the residency restriction violated the U.S. Constitution, because it unlawfully discriminated against Dr. Gideonse's out-of-state patients.

In March 2022, Compassion & Choices and the state of Oregon reached a settlement and the residency restriction in the Oregon law is no longer being enforced. As a result, Oregon officials have issued directives halting enforcement of the unconstitutional residency provision. They have also initiated a request to the state legislature requesting that the residency language be permanently removed from the law.

The removal of the residency requirement means that terminally ill Americans in any state will be able to access Oregon's Death With Dignity Act without having to establish state residency. They do, however, have to establish care in Oregon with a provider who will assume responsibility for their terminal illness care and follow all of the act's other requirements.

The Compassion & Choices lawsuit was the first in the nation to challenge a residency requirement in a medical aid-in-dying law. We anticipate in the coming years, with our leadership, other states may follow suit with the removal of similar residency requirements.



I have such appreciation for Compassion & Choices as an organization for helping move this forward. I deeply hope that this encourages states where there's not yet legal access to medical aid in dying to reconsider their position."

- Dr. Nicholas Gideonse, family medicine physician, Oregon

Successful Advocacy and Vigilance Against Legal Challenges

In addition to our victory in *Gideonse v. Brown*, below are cases where we represented plaintiffs or intervenors.

» In February 2022, Compassion & Choices secured a landmark victory with the settlement of *Almerico et al. v. State of Idaho et al.*, on behalf of four women challenging an Idaho law that voided the living wills of all pregnant people. The settlement requires Idaho to honor patients' advance directives, regardless of pregnancy status; create a new advance directive template without the pregnancy exclusion; and notify everyone with a registered advance directive of the court's decision.

» Compassion & Choices has successfully defended California's medical aid-in-dying law since it took effect in 2016. In November 2021, an appeals court dismissed the state lawsuit, *Ahn v. Hestrin*, which challenged the constitutionality of California's End of Life Option Act after a lower court temporarily suspended the law in 2018. In 2022, Compassion & Choices filed a motion on behalf of a terminally ill man, two physicians and our sister organization, Compassion & Choices Action Network, to intervene and oppose a federal lawsuit, *Christian Medical and Dental Associations, et al. v. Bonta, et al.*, seeking to invalidate several provisions of SB 380, a bill passed in 2021 to improve California's End of Life Option Act.



Massachusetts plaintiffs Dr. Roger Kligler (left) and Dr. Alan Steinbach (right).

» This March, the Supreme Judicial Court of Massachusetts heard oral arguments in *Kligler v. Healey*, filed by retired physician Dr. Roger Kligler (who has stage 4 prostate cancer) and Dr. Alan Steinbach, against Massachusetts Attorney General Maura T. Healey. The doctors asserted that terminally ill adults have both a constitutional and common-law right to medical aid in dying, because there is no criminal statute barring the practice. A ruling is forthcoming.

Amicus

As an amicus, Compassion & Choices may positively impact the direction of a case. This year, we contributed to two legal victories, with two cases pending.

- » In *Glassman v. Grewal*, we submitted an amicus brief urging the New Jersey Court of Appeals to affirm the lower court's dismissal of the case. The New Jersey Appellate Court affirmed the dismissal of a lawsuit seeking to overturn the state's medical aid-in-dying law on June 10, 2022.
- » In *Full Circle Living & Dying v. Sanchez*, we submitted an amicus brief (November 19, 2021) on behalf of Full Circle Living & Dying, a non-profit offering death doula services in California. California's Funeral Bureau attempted to regulate the doulas as if they were licensed funeral directors operating out of a funeral home. Our brief focused on how death doulas fit within patient-directed care.

- » In *Greenberg v. Montefiore New Rochelle Hospital*, our amicus brief supported an appeal involving an individual who received unwanted medical treatment at the end of life, contradicting his living will and his designated proxy's instructions. In March 2022, the New York Appellate Court issued an opinion allowing individuals to recover damages for unwanted end-of-life treatment, a huge win for the end-of-life options movement.
- » In *Ruan v. U.S.*, Compassion & Choices submitted an amicus brief in December 2021 arguing that opioids are often essential in treating dying patients and that prosecuting doctors who prescribe opioids in good faith harms end-of-life patient care. The Supreme Court of the United States heard oral arguments in this case in March and ruled favorably this summer.



THE LEGISLATURE

Compassion & Choices and the Compassion & Choices Action Network worked across the country to advance and implement laws that improve end-of-life care and choice. Our collective progress is outlined below.

Pushing the Movement Forward

California

We celebrated a landmark victory on October 5, 2021, when Governor Gavin Newsom signed SB 380, removing regulatory roadblocks to accessing the End of Life Option Act that impeded or prevented hundreds of qualified terminally ill Californians each year from using medical aid in dying to peacefully end their suffering. SB 380 reduces the mandatory minimum 15-day waiting period to 48 hours and requires all healthcare systems and hospices to post their medical aid-in-dying policies on their websites, increasing transparency. The measure also clarifies that the first oral request must be documented in a patient's medical record — even if the physician chooses not to support the patient in the option — and clarifies that medication can be taken in a hospital.

New York

We delivered thousands of signatures in support of medical aid in dying to Governor Kathy Hochul; produced a weekly email digest for lawmakers; held a rally and press conference; and installed a display in the Legislative Office Building. Our efforts garnered a record number of 72 sponsors for the medical aid-in-dying bill.

We also supported six pieces of legislation to improve healthcare options at life's end, including S8205A/A8880A, establishing a statewide advanced care planning campaign to promote hospice and palliative care services; and S8206A/A8881A, establishing a state office of hospice and palliative care access and quality.



top: Csaba Mera, Allyne Hammer, Dan Diaz, Dolores Huerta and Amanda Villegas showing support of SB 380 during our California 2021 campaign. bottom: New York State Senator Diane Savino speaking at our candlelight vigil and press conference at the state capitol.

THANKING OUR PROFESSIONAL COLLEAGUES FOR DONATED SERVICES

Compassion & Choices thanks the law firms and their attorneys and staff that provided pro bono legal assistance and generously gave their time and expertise this year. Collectively, these law firms contributed thousands of hours of service valued at more than \$1 million (July 1, 2021–June 30, 2022).

Angeli Law Group LLC

Peter Hawkes

Hana Oh
Jason Orr

William Pao

Jessica Waddle

Meng Xu

Emily Cooper

Alan Howard

Katie Page

Evelyn Pang

Bradley Bernstein Sands LLP

Gina Elliott

Darin Sands

Support Staff

William Atnipp

John Dalog

Judy Dhanraj

Paige Emery

Kristin Godfrey

Cara H. Johnson

Stephen Kemp

Jackie Lu

Cinda Pacheco

Estefania Franco Perez

Staci Williams

Philip Wong

Rickner PLLC

Rob Rickner

Tarrant, Gillies & Shems

Ronald A. Shems

Law Office of Jon B. Eisenberg

Jon B. Eisenberg

Tonkon Torp LLP

Robert Koch

Steven Wilker

Morgan, Lewis & Bockius LLP

Jonathan M. Albano

Nathaniel Bruhn

WilmerHale

David B. Bassett

Sanaz Payandeh

Kelsey Quigley

Zane Stucker

O'Melveny & Myers LLP

Houman Ehsan

Clint Harris

John Kappos

Laura Kaufmann

Gabe Castillo Laughton

Bo Moon

Perkins Coie LLP

Richard Boardman

During the 2022 Legislative Session

13 STATES INTRODUCED 22 BILLS TO AUTHORIZE MEDICAL AID IN DYING AND 3 STATES INTRODUCED BILLS TO IMPROVE MEDICAL AID IN DYING

with **329** we made **453** and **17**
bipartisan legislative sponsors/co-sponsors of medical aid-in-dying bills
legislative virtual and in-person visits
committee hearings (organized and participated in)

Progress Across the Country

Connecticut

We made incredible progress this session when the Public Health Committee advanced our medical aid-in-dying bill in a bipartisan vote, though it was later defeated in the Judiciary Committee through a rarely used political maneuver. We continued to build visibility and momentum through the tireless work of our supporters, including a pre-hearing press conference; a storyteller video project; collaboration with actor and Connecticut resident James Naughton; numerous media articles; a Lobby Day at the Capitol; and legislative meetings by terminally ill advocate Kim Hoffman, prior to her death.

Delaware

Delaware's medical aid-in-dying bill was passed by the House Health & Human Development Committee, but did not advance further. As in other states, the failure to act ignored widespread public and professional support: a poll conducted by NüPOINT Market Research confirmed that nearly 3 in 4 Delaware physicians (74%) support our legislation; of those, 77% are members of the Medical Society of Delaware. During the course of the session, we held virtual meetings and in-person

volunteer engagement meetings; staffed booths at various events; hosted multiple lobby days at the Capitol; held visibility rallies in targeted districts; and acquired extensive media coverage through television segments, radio interviews, op-eds, articles and letters to the editor.

Florida

While success in this state continues to be a long-term objective, we had one of our busiest years yet, with eight Action Teams; storyteller recruitment and training; more than 30 local events; and a statewide "Get Together Florida" campaign to promote and facilitate end-of-life planning. We also launched a newsletter that covers the latest statewide updates, listings of local and national events, and a plethora of useful planning resources in each issue.

Hawai'i

Our Hawai'i improvement bill made it further than ever before. It passed nine committees and cleared both the House and the Senate, but was blocked behind the scenes at the 11th hour. We continue to build momentum for potential passage in the next legislative session.

“When I reached out to Compassion & Choices, I called the Doc2Doc line. The medical director called me back almost immediately. He really walked me through the law. Here I was, this novice, not understanding, and he totally normalized it.”
- Dr. Charlotte Charfen, emergency medicine physician, Hawai'i

Illinois

Compassion & Choices is the proud co-leader of a statewide coalition, Illinois End-of-Life Options Coalition, in partnership with the ACLU of Illinois and Final Options Illinois. Since the session ended, we have met with 23 legislators to advocate for the authorization of medical aid in dying. Nine volunteer action teams are highly active across the state, holding more than 40 events and training workshops during the year and educating communities about end-of-life care options, advance care planning and dementia.

Massachusetts

The End of Life Options Act passed the Joint Committee on Public Health, but advanced no further, despite our latest poll showing record high support for medical aid in dying (77%). In addition to the poll, we continued to gain ground with a virtual legislative briefing attended by 100 lawmakers and staff. And we added to our strong core of bipartisan champions with 113 of the chambers' 197 legislators supporting our bill.

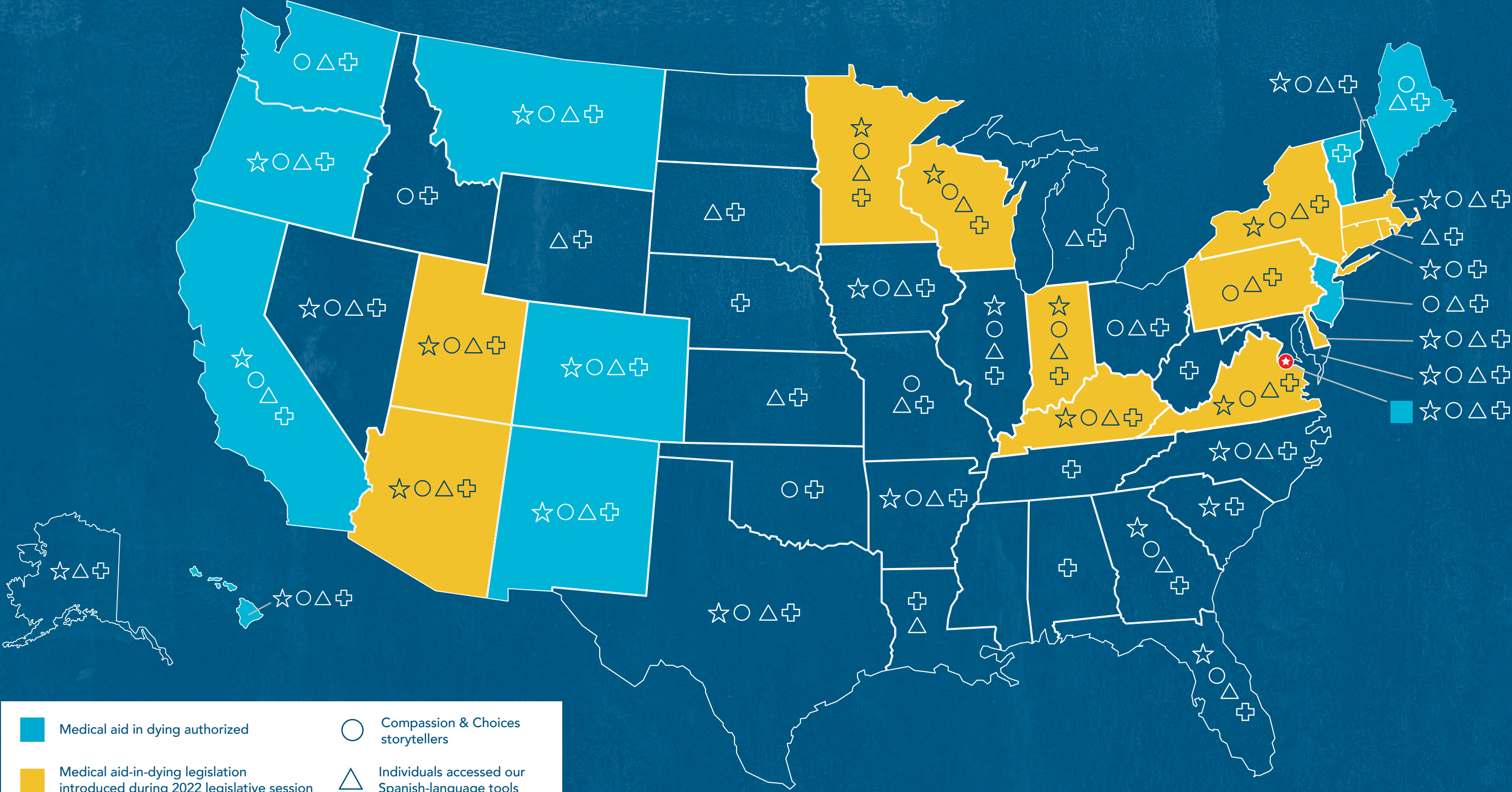
New Mexico

We partnered with End-of-Life Options New Mexico to educate patients and providers about the state's medical aid-in-dying law, which went into effect in June 2021. We also collaboratively worked to encourage health systems to adopt supportive policies. It was reported that more than 100 terminally ill New Mexicans have died peacefully after using the law.

Vermont

Working with Patient Choices Vermont, we helped pass amendments to the Patient Choice and Control at the End of Life Act that was originally adopted in 2013. The improvement legislation allows patients to utilize telehealth to request access to medical aid in dying, makes a clear statement that medical professionals are protected when acting in good faith under the law; and removes the 48-hour wait between a patient's final request and the physician writing the prescription. These three important changes give eligible terminally ill residents better access to the law. The bill received bipartisan support and was signed into law by Governor Phil Scott.

Organized Efforts in Every State



 Medical aid in dying authorized	 Compassion & Choices storytellers
 Medical aid-in-dying legislation introduced during 2022 legislative session	 Individuals accessed our Spanish-language tools
 Compassion & Choices volunteer groups	 Individuals called our end-of-life care consultants



ADVANCING HEALTH EQUITY

We have been elevating the voices of people from diverse communities in our shared advocacy of the importance of end-of-life planning, including making informed end-of-life healthcare decisions.

- » **Promoting Influential Resolutions.** We supported the NAACP, the National Organization of Black Elected Legislative Women (NOBEL Women) and the nurses' sorority Lambda Psi Nu with their successful efforts to adopt organizational resolutions that urge families to educate themselves about end-of-life planning — a significant step toward building end-of-life equity across all our nation's diverse populations.
- » **Innovative Collaborations.** We expanded a highly successful collaboration with Ventanilla de Salud, a program developed by the government of Mexico to help Hispanic families living in the U.S. identify and obtain referrals for the health services they need. This has given literally millions of people in one of our nation's fastest-growing populations access to the vital information and resources of Compassion & Choices.
- » **New Dedicated Councils and Boards.** We launched two new groups — an Asian American, Native Hawaiian and Pacific Islander (AANHPI) Leadership Council and an LGBTQ+ Leadership Council. They join the African American and Latino Leadership Councils in providing essential expertise, valuable feedback and authentic voices to our work.
- » **Health Inequities Summit.** We convened the first-ever "Summit on Health Inequities in End-of-Life Planning and Care." Medical, policy and social service experts in palliative care, hospice, and primary and emergency healthcare joined us, along with partner organizations Latinos for Health Care Equity, the National Hispanic Council on Aging, VITAS Healthcare, NOBEL Women and SAGE USA. Using a Compassion & Choices scan of available research, the event conducted a roundtable working meeting resulting in a summit report on potential federal policy solutions, titled "Addressing Inequities in End-of-Life Planning and Care: Advancing Equity at Life's End."
- » **New Initiatives.** Faith Leaders for Compassion and Catholics for Compassion were developed for supporters from different faith perspectives. We also connected with a new organization, Us for Autonomy, to elevate the voices of the disability community while they conduct outreach and advocacy in support of end-of-life options. These efforts enable us to extend our reach, cultivate new voices and serve more communities.

“Healthcare and the issues that Compassion & Choices are concerned about are on the minds of not only the membership of the Albuquerque NAACP branch, but also beyond. Our partnership is very valuable and I hope we can continue this partnership.”
 - Dr. Harold Bailey, community leader and past president of the Albuquerque NAACP, New Mexico

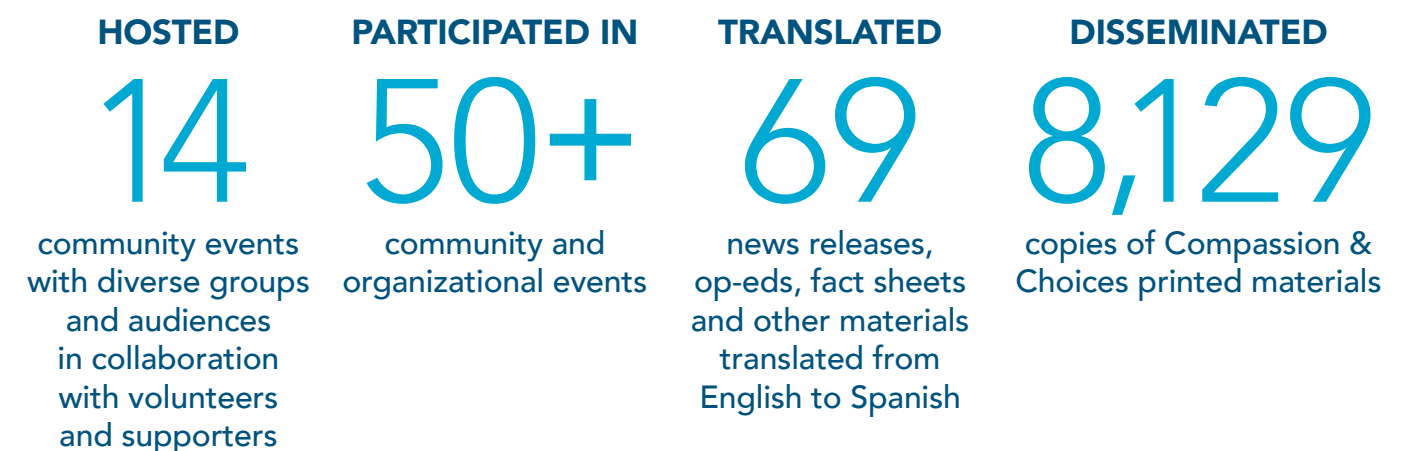
» Honoring Heroes and Change-Makers With Compassion & Choices Awards

Rev. Madison T. Shockley II received the 2022 Rev. Dr. Paul Smith Leadership Award for his unwavering commitment to improving end-of-life care and options in his community and beyond. The award, given annually to a faith leader, is named in honor of civil rights leader and end-of-life care advocate Rev. Dr. Paul Smith, who was the award's inaugural recipient last year.

The inaugural Dolores Huerta Mission and Vision Award went to the iconic civil rights activist Dolores Huerta, who played a key role in fighting for passage of medical aid-in-dying laws, and continues to educate others about end-of-life care options and the importance of advance care planning. Her namesake award will be presented in future years to leaders who embody Dolores Huerta's extraordinary commitment to human rights at the end of life.

The NOBEL Women Corporate Champion Award was given to Compassion & Choices in recognition of our mission to serve as "a global voice to address a myriad of issues affecting women, children and families." NOBEL Women specifically cited our "Education, Empowerment and Advocacy" webinar series, which provided end-of-life education at the height of the COVID-19 pandemic. NOBEL's other award recipient was Pfizer, recognized for their development of the COVID vaccine.

Our Outreach Impact





DEMENTIA

This year brought renewed momentum to Compassion & Choices' pioneering dementia programming, enabling us to reach and educate more people and provide valuable tools to those living with a dementia diagnosis.

The outreach described below combined educational programs and ads in trade association publications and newsletters, resulting in 15% more people completing our proprietary dementia tools in FY22 than last year, and 25% more than in 2020, the year the tools launched.

Despite the lingering challenges of the COVID-19 pandemic, Compassion & Choices was able to maintain a strong program through our online platform.

- » "Empowering the Black Community & the Impact of Dementia," an impactful and informative online discussion during Black History Month, was led by clinical psychologist Dr. Jeff Gardere, Healthcare Advisory Council member Dr. Sonja Richmond, and African American Leadership Council member Ottamissiah "Missy" Moore, RN.
- » "Deep Dive Roundtable on Dementia" was hosted at the 2021 Upswell Summit, dedicated to "building a healthy and racially just nation."

- » California Hospice and Palliative Care Association (CHAPCA) saw our staff present over six-hours of content on a range of topics from medical aid in dying to dementia at their 2022 annual conference.
- » "Future Proof Webcast": Kim Callinan sat down with ASA President and CEO Peter Kaldes to discuss dying and dementia on this national podcast. Kim also joined Dr. Chandana Banerjee, City of Hope and Compassion & Choices board member on "ASA presents: State of Movement with End-of-Life Care: Medical Aid in Dying."
- » "Not Old - Better" in another podcast National Director of Community Engagement Brandi Alexander spoke about dementia and the Black community (show #605: "How Dementia Is Impacting Black America"). She also discussed Compassion & Choices' own dementia webinar and our online dementia diagnosis and care planning tools. The program was featured on Apple News and aired nationally on various stations in February.



I used Compassion & Choices' Dementia Values and Priorities Tool and Dementia Decoder to support mom. When we were making our list of the daily activities mom makes in a general day — and what she may not be able to do yet still finds enough joy in life — the Dementia Values and Priorities Tool was helpful."

- Wendy Longacre Brown, loving daughter of Cheryl Harms Hauser and death doula, Minnesota



STANDARDS OF MEDICAL CARE

In partnership with our national Healthcare Advisory Council, Compassion & Choices transforms the way end-of-life care is delivered in our country so that it steadily becomes more patient-directed.

- » "City of Hope End of Life Symposium." We were the lead national sponsor and among the faculty for this year's annual event in Las Vegas, at which two days of inspirational and much-lauded clinical medical education were provided to an audience of 400 in-person and virtual participants.
- » **Doc2Doc.** We are actively building networks of doctors and other allied health professionals, health systems and associations who collaborate with us to ensure medical professionals are properly trained and have opportunities to speak with peers and be mentored about the medical aid-in-dying process.
- » **Sponsorships.** Through a new sponsorship program, we are creating opportunities for young medical professionals to attend hospice and palliative care conferences, showcase their work and network with others in the field. We also sponsor research on grief in medical aid in dying as well as the delivery of hospice to prison inmates.
- » **Emergency Medicine.** We launched a new national initiative to promote collaboration between emergency department and palliative care teams to reduce unnecessary suffering for patients who are or subsequently diagnosed to be terminally ill, fostering better alignment with end-of-life treatment and a patient's stated end-of-life values.
- » **American Society of Aging (ASA).** Compassion & Choices participated in the nation's largest multi-disciplinary conference on aging, ASA's annual conference as featured presenters on "Inequities in Care at End of Life" and "Medical Aid in Dying."
- » **Ending Inaccurate and Pejorative Language.** We developed a proposal to change wording in the "American Psychiatric Association's Diagnostic and Statistical Manual of Mental Disorders," Fifth Edition, Text Revision (DSM-5-TR™), to clarify the distinction between suicide and medical aid in dying.

PEOPLE REACHED

2,554

through conferences and association/organization presentations that included education, technical and policy assistance around medical aid in dying, dementia and advance care planning tools and resources.



INFLUENCING THE NATIONAL CONVERSATION

The greatest contribution of Compassion & Choices to the advancement of our mission has been the sea change in public perception of medical aid in dying from a “fringe” and controversial practice to a mainstream, broadly supported and recognized option for terminally ill patients. As our successes gained media coverage and our storytellers penetrated the national conversation, we expanded this influence by sharing our thought leadership, expertise and goals in an ever-growing range of public conversations and communications platforms.

Compassion & Choices Thought Leadership

- » **USA Today.** In September 2021, the nation’s largest newspaper, with a readership of 2.6 million, published a major op-ed in which Compassion & Choices President and CEO Kim Callinan asserted that the country should follow the breakthrough standard set by the New Mexico legislature in removing burdensome and over-long waiting periods for access to medical aid in dying.
- » **Telehealth.** We submitted comments to assist the U.S. Department of Health and Human Services Agency for Healthcare Research and Quality in their review of telehealth services during the COVID-19 pandemic, promoting their potential benefits in the delivery of end-of-life care post-pandemic.
- » **“Conscience Rule.”** We secured the support of 50 allied organizations for our letter to the secretary of the U.S. Department of Health and Human Services, Xavier Becerra, calling for removal of the dangerous 2019 “Conscience Rule,” which allows healthcare providers and other entities to impede or deny patients access to end-of-life care. Our efforts resulted in an executive review of the rule and we await a favorable outcome.

Leveraging the Power and Influence of Popular Entertainment

- » In June, Compassion & Choices hosted a national conversation led by Dr. Jeff Gardere with Compassion & Choices President Emerita/Senior Advisor Barbara Coombs Lee and playwright Devorah Medwin, the author of “Wooden Nickels: A Life and Death Drama,” a powerful and innovative Zoom performance showcasing a family grappling with how to care for their aging mother and respect her wishes for autonomy. The discussion was interspersed with scenes from the play, in which Coombs Lee, playing herself, joins the family as an end-of-life care consultant. Both characters and audience benefit from Barbara’s clear explanation of end-of-life options and an overview of Compassion & Choices’ tools and resources. Nearly 1,000 people registered to join this exclusive event, which concluded with an interactive Q&A session. We also supplied all attendees with a discussion guide to facilitate ongoing conversations.
- » In the summer of 2021, Compassion & Choices executive produced the “Goodbye, New York” original cast album and live concert performance of this theatrical production about the fateful choices of a terminally ill young woman. Recording of the album was capped off by a sold-out concert at legendary cabaret Feinstein’s/54 Below, in the heart of New York’s theater district. In addition to the live performance, the concert was streamed online across the country and promoted by Compassion & Choices.

Creating Impact and Influence via Latino Media

- » In August 2021, Compassion & Choices received a forceful and influential editorial endorsement of SB 380, California’s End of Life Option Act, from the Los Angeles Times en Español.
- » In May 2022, the two leading Spanish-audience newspapers in the U.S., El Diario Nueva York and La Opinión (Los Angeles), published an op-ed by José Antonio Tijerino (president/CEO of the Hispanic Heritage Foundation) and Dr. Yanira Cruz (president/CEO at National Hispanic Council on Aging) entitled “Let’s Create a Culture Shift in the Way We Prepare for the End of Our Lives.” El Diario reaches over 5 million online users, while La Opinión is the second most read newspaper in Los Angeles.
- » In June 2022, People en Español, one of the largest Spanish-language publications in the U.S., published an exclusive interview with iconic civil rights activist and leader Dolores Huerta when she received our inaugural Dolores Huerta Mission and Vision Award (see page 11). The online version of the story included a video interview with Huerta and photos of the award ceremony. The story was also featured on YAHOO! news.

left: cast members performing live from the “Goodbye, New York” album. right: Dolores Huerta accepting her namesake award.



COMBINED STATEMENT OF FINANCIAL POSITION

June 30, 2022

Assets

Current Assets

Cash and cash equivalents:	
Operating	2,629,496
Investments	2,056,860
Pledges receivable-current portion	357,500
Investments	36,156,166
Prepaid expenses	425,935
Beneficial interest in charitable remainder trusts	112,374
Total current assets	41,738,331

Property, Equipment and Improvements, at Cost

Furniture, fixtures and equipment	356,540
Leasehold improvements	11,695
Total property, equipment and improvements, at cost	368,235
Less accumulated depreciation and amortization	359,659
Net property, equipment and improvements, at cost	8,576

Other Assets

Pledges receivable net of current portion	45,000
Intangible assets, net	7,417
Investment, partnership interest	238,841
Deposits	20,039
Total other assets	311,297
TOTAL ASSETS	42,058,204

Liabilities and Net Assets

Current Liabilities

Accounts payable	467,955
Accrued expenses	1,050,492
Deferred revenue	5,000,000
Total current liabilities	6,518,447

Long-Term Liabilities

Deferred revenue, net of current portion	12,500,000
Gift annuity payments due	398,860
Total long-term liabilities	12,898,860
TOTAL LIABILITIES	19,417,307

Net Assets

Without donor restrictions:	
Operating	21,975,914
Net investments in property, equipment and improvements	8,576
With donor restrictions	656,407
Total net assets	22,640,897
TOTAL LIABILITIES AND NET ASSETS*	42,058,204

COMBINED STATEMENT OF ACTIVITIES AND CHANGES IN NET ASSETS*

For the Year Ended June 30, 2022

Revenue and Other Support

Contributions	22,824,502
Donated services	1,072,478
Membership fees	43,694
Investment income, net of expenses	1,045,972
Realized and unrealized gain on investments	(5,073,812)
Other income	5,352
Total revenue and other support	19,918,186

Expenses

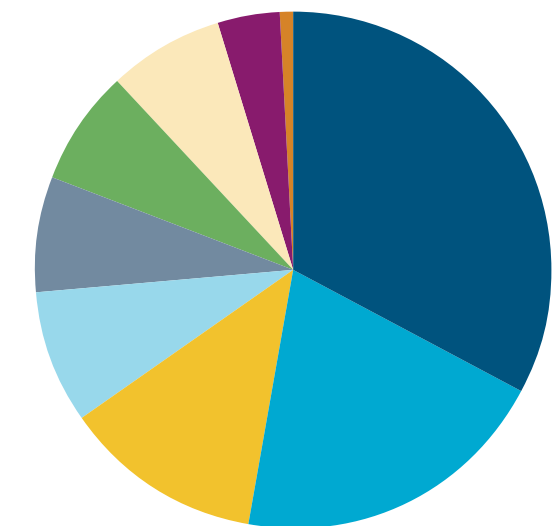
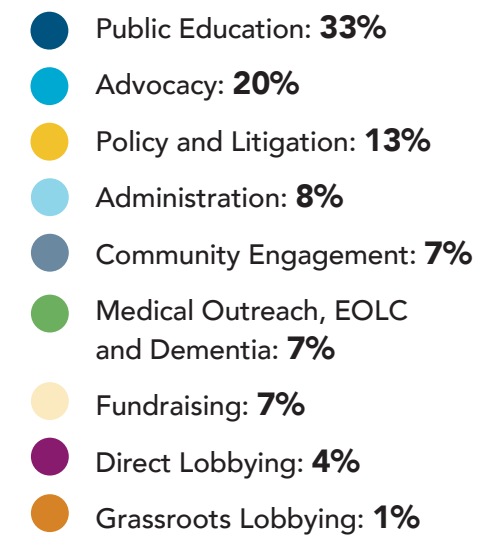
Programs	18,017,389
General and administrative	1,782,928
Fundraising	1,520,361
Total expenses	21,320,678
Decrease in net assets	(1,402,492)

Net Assets, Beginning

Net assets, beginning	24,043,389
NET ASSETS, ENDING	22,640,897

ALL COSTS*

For the Year Ended June 30, 2022



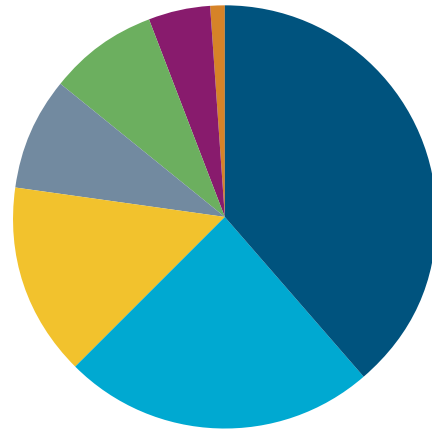
* Compassion & Choices and Compassion & Choices Action Network

PROGRAM EXPENSES AND RATIOS

For the Year Ended June 30, 2022

This pie chart and table offer a detailed look at how Compassion & Choices' expenses are distributed by program area.

- Public Education: **39%**
- Advocacy: **24%**
- Policy and Litigation: **14%**
- Community Engagement: **9%**
- Medical Outreach, EOLC and Dementia: **8%**
- Direct Lobbying: **5%**
- Grassroots Lobbying: **1%**



	COMPASSION & CHOICES	COMPASSION & CHOICES ACTION NETWORK	TOTAL
Public Education	6,800,998	202,577	7,003,575
Advocacy	3,831,407	448,990	4,280,397
Policy and Litigation	2,644,558	--	2,644,558
Medical Outreach, EOLC and Dementia	1,533,991	–	1,533,991
Community Engagement	1,549,530	–	1,549,530
Direct Lobbying	393,110	454,336	847,446
Grassroots Lobbying	157,892	–	157,892
TOTAL PROGRAM EXPENSES	16,911,486	1,105,903	18,017,389

* Compassion & Choices and Compassion & Choices Action Network

THANK YOU FOR YOUR SUPPORT

As we reflect on the past year, we are humbled by the generosity of our supporters across the country. In the following pages, we give thanks to those who sustained and advanced our work with annual and planned gifts made during the fiscal year (July 1, 2021–June 30, 2022). Every supporter and every contribution has an impact, and we honor and celebrate all who are committed to this work. Thank you for making this year a wonderful success.

Ways to Donate

Online: CandC.org/donate

Call: 800.247.7421 x2159

Mail your gift to:
Compassion & Choices
Gift Processing Center
PO Box 485
Etna, NH 03750

How You Can Help

Legacy Gifts: A planned gift can provide significant tax benefits and even tax-free lifetime income. To learn more, contact us at 800.247.7421 x2152 or plannedgiving@CompassionAndChoices.org.

Legacy Challenge Match: Create a new planned gift, or notify Compassion & Choices of your current planned gift, and an anonymous donor will donate \$500 in your honor. For more information, contact us at 800.247.7421 x2152 or plannedgiving@CompassionAndChoices.org.

We also accept all types of stocks, as well as IRA-qualified charitable distributions, real estate and insurance policies.

We are deeply grateful to the following donors — and more than 35,000 others not listed — whose generosity and commitment make our success possible.

(July 1, 2021–June 30, 2022)

**Circle of Transformation
(\$1 million+)**

Anonymous
Susan Jones *
Donald A. Pels Charitable Trust

**Circle of Leadership
(\$500,000+)**

Dr. Mimi Greenberg *
Stupski Foundation

**Circle of Autonomy
(\$250,000+)**

Anonymous
Paul and Kathleen Blank *
Paul Chodroff, M.D. *
Fidelity Charitable Gift Fund
Joan Haberman *
Elizabeth Hall *
Edward Patricks
Vanguard Charitable Endowment

**Circle of Compassion
(\$100,000+)**

Anonymous (2)
Apple Pickers Foundation
Bank of America Charitable Gift Fund
Leslie and Bill Biggs
Norman Fidelman *
Marge Goldman *
Vera Gordon *
Willis Kleinenbroich *
Ken and Frayda Levy
The Purple Lady Fund/Barbara J. Meislin
Lloyd Prezant *
Quicksilver Fund
Schwab Charitable Fund
Daphne Whitman

**Circle of Choice
(\$50,000+)**

Anonymous
Joyce Abbott Ph.D. *
Cecilia and Garrett Boone
Colcom Foundation
The Community Foundation for a Greater Richmond
The Community Foundation of Harrisonburg and Rockingham County
Dr. Garner Downey *
The Garner H. Downey Pass Through
Earth and Humanity Foundation
Mitzi and Warren Eisenberg Family Foundation
Suzanne Gardon *
Head Family Charitable Foundation
Harriet Lesser and Phil Harvey *
Arleene Lettiere *
Karen MacArthur *
Christopher Moos *
Raymond James Charitable Endowment Fund
Sandra Rowley
RRF Foundation For Aging
Isabel Sawhill
Miriam Sexton
Jerri Lea Shaw and Raymond H. Johnson Jr.
Margaret Simpson *
Barbara Tucker *
Walnut Fund
Sheila Wander *
Irene and Alan Wurtzel
Zickler Family Foundation
1848 Foundation

SYMBOL KEY	★ Deceased
	✦ Champions Circle member (recurring monthly gift)

**Circle of Comfort
(\$25,000+)**

Anonymous (7)
Burt Bassler
Joyanne Bloom
Richard A. Busemeyer Atheist Foundation
Bill Charlton
Daniel P. Collins
Craig Dawson *
Elizabeth De Cuevas
SN Charitable Foundation
Alison Ditzen *
Suzanne Dupre *
Bernie Gannon *
Penny and Bill George, George Family Foundation
Jill and Brad Gordon
Jill and Brad Gordon Family Foundation
Dan Grossman
The Y. C. Ho/Helen and Michael Chiang Foundation
Richard Jeroloman *
Carolyn Jones *
Dr. Paula Kislak
Paul Klaassen
Susan and Robert Knox
Edward Martin
Morgan Stanley Gift Fund
Dr. Irene Nichols *
The Powell Family Charitable Trust
Robert Raben
Howard and Beverly Rossman
Thoracic Foundation
George Vradenburg
Sarah Wasch +
Sarah Young *

**Circle of Dignity
(\$10,000+)**

Anonymous (15)
Susan W. Agger Family Fund of the Greater Washington Community Foundation
The Andromeda Fund
Benevity, Inc.
Stuart and Lauri Bond, Karen Dechman Bond
Wendy Boorn *
Sarane Bowen
Ernestine Bradley
Robert Brush
Thomas Cameron
Edward Casson +
Elaine and Phillip Charney
The Bonta and Helen Hiscoe Charitable Fund
Fay Clayton and Lowell Sachnoff
Joann Corey *
Jane Cowles
Robert and Teri Crosby, The Longview Foundation
Diane and John Dalsimer
David and Pamela Family Fund
Walter Ducharme *
E. A. Moos Foundation

Constance Eagle
Jean and Ric Edelman
Marcy Eisenberg
Amitai Etzioni
Facebook
Bill Falik and Diana Cohen
The Fletcher Kirkpatrick Ferrow Revocable Trust
The Fiduciary Trust Charitable Giving Fund
For Pete's Sake
Diane Froot and Joyce Froot
Douglass Garibaldi
Mamatha Gavini +
Gay Libertarian Fund
Debbi Gibbs
Susan Gilardi
The Give Lively Foundation
Kelley Graham, Foundation for the Carolinas
Greater Kansas City Community Foundation
The Greater Washington Community Foundation
Karen and Werner Gundersheimer
Nor Hall and Roger Hale
W. Lee Hansen
Serena Hatch
Whitney Hatch
Merrit and Joan Heminway
Bayard Henry
Nancy and Bob Hoyt
Humanist Fund
Ann and George Hunter
Dr. and Mrs. Jeffrey Ilfeld
Jewish Federation of Metropolitan Chicago
Kaplen Brothers Fund
Vicky Kleinman
Kosasa Foundation
Lana Kumar
Leibner Cooper Family Foundation
Alice Lesney
The Longview Foundation
Charles Ludlam and Paula Hirschoff
Susan and Sheldon * Lustigman
Linda Lutes
Daniel Lynch Foundation
Marin Community Foundation
Robert and Polly McCrea
Marjorie McDowell
Joan McFadden
The Curtis W. McGraw Foundation
Juliette J. Meeus
Irene Minkoff, Abraham Fuchsberg Family Foundation
The Minneapolis Foundation
Stephen Modzelewski and Deborah Sze
Karen Morgan *
Mary Morgan
Morgan Stanley
Morgan Stanley Global Impact Funding Trust Inc.
Chris and Jack Morrison
Sandra Jo Moss
Maryanne Mott
Linda Nearing *
Raymond Netherwood
Noble Foundation

Roger and Joyce Nussbaum
Helene O'Connell *
Mary Oba
Janet Lutton Olt
Oregon Community Foundation
Natalie Orfalea Foundation
Marion Payse *
Evelyn R. Perl
Charles Pilgrim
Jill Richter and Robert Kazer
Leora and Mort Rosen
Ritta Rosenberg
Robert Ross
Samantha B. and Mark J. Sandler
Mick and Alison Seaman
Mick and Alison Seaman Fund
Elizabeth Shattuck
Suzanne Shynne
Sidney Stern Memorial Trust
Sharon Simpson
Vivian and Harry Snyder
Barbara Stern *
David Sturgeon
Rita Tancredi *
Claude and Tina Thau
The Thompson Family Foundation Inc.
The Tuckereeves Fund
Stephen and Diane Uhl *
Betsy Nimitz Van Dorn
Barbra Vogen
Dr. Caryn Wachsler
Maureen Waldie
Arlene Weintraub
Mary-Lou and Lawrence Weisman
Ellen Westheimer
Whittier Trust Company
Priscilla Bernard Wieden and Dan Wieden
Michael and Devera Witkin

**Circle of Care
(\$5,000+)**

Anonymous (13)
Jane Ahrens
American Endowment Foundation
Catherine Andrus
The Associated Inspiring Jewish Community
Bernadette Augustinack
Nancy Ayres
Bar-Levav Family Foundation
Terry Bean
The Behavioral Health Fund
Laura and Melvin Bernstein
Jeff Boarini
Dr. H. Leon Bradlow and Hattie Bradlow *
Ms. Elizabeth H. Bromley and Mr. Dougin Walker
Christa Burgoyne
Janis Calton
Maria Cardamone
Stacey B. Case
Kate Cashel Fund
Sandra Cath

Susan Clark
 Laurie Cohn
 Commonwealth Charitable Fund
 Community Foundation for the Greater Capital Region
 Janet Conn and Michael Debelak
 David Cook and Ann Thompson Cook
 Rev. Norman Cram Jr.
 Ellie Crosby, The Longview Foundation
 Susan Curry and Gail Daniels
 John Davis
 Carolyn Deodene *
 Daniel Dolk
 Eileen Fagan
 Jim Feldman and Natalie Wexler
 Audrey and James Foster
 David and Sharon Froba
 David Geisinger *
 Dr. Jon Geller +
 Phyllis Girvetz
 Jennifer Gittins-Harfst
 Lance Goldberg
 Bernard Goodman
 The Green Leaf Trust
 Nancy Greenhouse and Patrick Canavan
 Juli Greenwald
 Barbara Guensche
 Drs. David and Kathleen Haaland
 Jerry and Barbara Haines *
 David Hartke and Marianne Baker Simpson
 Eric Hemel
 Larry Hendrickson and Barbara Forster
 Thomas Hoch and Mark Addicks
 Joyce Day Homan
 The Eva and Dolf Hubschman Fund
 The Hummingbird Charitable Fund
 Stephen and Margaret Hut
 Impact Assets
 Daryl Holtz Isenberg, Ph.D.
 The JEC Foundation
 Jewish Communal Fund
 The Jewish Community Foundation of Greater Phoenix
 Jewish Community Foundation San Diego
 Marcy and Robert Katz
 Waldemar Kerbel
 Robert Koch
 Mary and Michael Koerner
 Marlise C. Konort
 William and Naomi Kramer
 The William K. and Naomi Kramer Charitable Trust
 Wendy and Doug Kreeger
 Lucien Lacour
 John Langmore
 David Lanier *
 Merloyd Ludington Lawrence *
 Tina Lear and Elena Terrone
 Daniel Lednicer *
 Patricia Leftwich
 Daniel Long
 Mickey MacIntyre
 Nivin MacMillan
 Norman Mandelbaum

Elaine Marcuse *
 Walter McCarthy and Clara Ueland
 Richard and Shirley McDonald
 The Katharine K. McLane and Henry R. McLane Charitable Trust
 Burt Meldman
 Csaba Mera +
 Paula D. Merritt
 Greg Miller
 David Montague
 Patricia Moore and Arthur Cotton * Moore
 Marta Morando
 Robert Morris and Joan Templeton
 Cookie and Ken Neil
 The Neil Family Fund
 Network for Good
 Nancy Nichols
 The Northern Trust Company
 Leslie O’Loughlin
 Gerhard and Carol Parker
 Paulus Foundation
 Marta Pazos
 Mauree Jane Perry
 Prof. John Pikulski
 Gail Piltz
 Gillette Piper
 Gigie and Laurence A. Price
 Karen and David Pye
 Margery Ramsey
 The Bonnie and Peter Reagan Fund of OCF
 Renaissance Charitable Foundation, Inc.
 Lynn Riggs
 Dr. John Roberts and Mrs. Anne Roberts
 Emilie Wood Robinson
 Arthur and Toni Rembe Rock
 Eric J. Ruby, M.D.
 Peter Schaffer
 The Schaffer Family Foundation
 Harper Schantz and Mary Jo Hackett
 Anne Markham Schulz
 Dr. Raul Sepulveda
 Dr. Igal Silber and Diane Silber
 Tedi Siminowsky and Michael Sosin
 The Simpson P. S. B. Fund
 Kathleen Snider
 The Stanislaus Community Foundation
 Dr. Karen Seal Stewart
 George Cashel Stoney
 Howard D. Stowe
 Stucki Family Foundation
 Sulzberger and Perpich Family Fund
 Robert Susser *
 Jerald Thompson *
 Fred Turkovich and Deborah Swenson
 The U.S. Charitable Gift Trust
 Jorge and Guadalupe Uribe
 Theodore Utchen *
 Marcia Vincent
 Susan and Patrick Vitek
 Carole Warren
 Linda C. Washburn +
 Mark Weideman
 Stephen Weinroth

Mary Ruth Weisel M.D.
 Weissman Family Foundation
 Rebecca and John * Wetzel
 Richard White
 The Maria and Nigel Wilson Charitable Fund
 Ellen Wormser
 Margaret V. B. Wurtele

Circle of Love (\$2,500+)

Anonymous (16)
 Yvonne Adams and Jeremy Green
 Andrea Alfano and Charles Freiberg
 Ann Bezoier Anderson
 George Arnstein
 Aspen Business Center Foundation
 Richard and Victoria Baks
 Joan Barnes and Richard Byrne
 Jeffrey Becton and Hillary Becton
 The Becton Family Foundation
 Sue Bennett
 Janet and David Berry
 Jeffrey Block and Michele * Gerus
 David Bowen and Dr. Carol Boerner
 Dr. Harry Booth
 Edward Brink
 Karen L. Buxbaum and Ron Kwok
 CAF American Donor Fund
 The Shaw Carroll Giving Fund
 The Charina Foundation
 Stephen Charles
 Kathleen Cheevers
 Anne Clark and Ed Parker
 Todd and Cheryl Collart
 The Columbus Foundation
 The Community Foundation Boulder County
 The Community Foundation of Middle Tennessee
 The Community Foundation of Western Massachusetts
 Anne Cooke
 The Susan S. and Robin D. G. Cooper Charitable Gift Fund
 Page and Jay Cowles
 Joanne and Terry Dale
 Monika Daley
 Barbara Dayan
 Joan Dayton
 The Joan L. Dayton Revocable Trust
 Geraldine De Paoli
 Patricia DeYoung
 The Dicentra Fund
 Ruth Dinowitz
 Dr. Richard Feldman and Roberta Feldman
 Vasanti Ferrando Fithian
 Sara and Russell Foszcz
 Steven Fraider
 Ellen Friedlander
 Friedlander Family Fund
 Valerie Friedman
 Kristine Fulmer
 Marianne Gabel
 The Gabel Lateiner Better Future Fund

Barbara Gail and James V. Franch
 George Mills in memory of Crystal
 Janelle Gentry
 Ramon E. Gilsanz
 Alfred Glassell and Marli Andrade
 Elizabeth Goldwasser
 Linda Greenhouse
 Julia A. Gregory
 George Griffin Jr.
 Michael B. Griffith
 Kenneth Guza and Diana Larsen-Mills
 The Bill Handsaker Fund
 Sidney Harrell
 Mary Harz
 Lee Hausman
 The Helen G. Hauben Foundation
 Mavis Hetherington
 Kathleen Hogan
 John and Valerie Hopkins
 Thomas Housen
 Anne Humes
 Jewish Community Foundation Los Angeles
 Louise Karr
 John Kayser
 Susan Kennedy
 John and Patricia Kojis Family
 Joel and Sara Kremer
 Mary Jane and Rick Kroon
 Catherine Curran Labib
 John Lapham
 Gayle Larson
 Eric Lax and Karen Sulzberger
 The Lederle Family Charitable Fund
 Liz and Sam Lightner
 The Lightner Sams Foundation of Wyoming Inc.
 Leonard M. Lipman Charitable Fund of the Jewish Community Foundation of Los Angeles
 Adlyn and Ted Loewenthal
 Lynne Malina
 Laurie and John McBride
 Paul Mendelsohn
 Richard and Ronay Menschel
 Josefina and Ricardo Moran
 Karen and Neal Morgan
 The Rev Frank and Betsy Moss
 National Philanthropic Trust
 Karen Neal
 Dr. Pamela Nelson
 Northern Trust Charitable Giving Program
 The Isobel Parke Revocable Trust *
 PayPal Giving Fund
 Dana Pearl
 Denise Peine
 Dr. Joseph Perpich, J.D. M.D. and Cathy Sulzberger
 Nadine Pflueger
 Jeanne Phillips
 Katharine Pierce
 The Katharine C. Pierce Fund
 Halina Platt
 Production Solutions
 Jane Annette Radcliffe *
 The Thomas J. Reinhart Foundation

Joseph Renfield
 Gayle Riggs
 Gov. Barbara K. Roberts and Mr. C. Donald Nelson
 Rockefeller Philanthropy Advisors
 Mr. and Mrs. William M. and Sandra B. Rosen
 Lynne Rosenthal
 Marilyn Rosskam and Skip Rosskam
 Dr. Joy Sabl
 Sandy and Joe Samberg
 San Francisco Foundation
 Christie Sanders
 Dorie W. Schwertz
 The Seattle Foundation
 SEIA
 Kathy Shamey and Bonnie Kramer
 Bev Shannon
 Merri Lea Shaw and Bruce Carroll
 Dorothy Davis Smith
 Peter and Betsy Snow
 Donald Spanninga
 The Spanninga Fund
 Shirley and Stuart Speyer
 Robert and Molly Stine
 Marcia Strean *
 Chacea and Donald Sundman
 The Sundman Family Fund
 Drs. Edwin and Dorothy Sved
 Wendi Swidler
 Roselyne Chroman Swig
 The T. Rowe Price Program for Charitable Giving
 Philip and Sarah Taylor
 The Teresa De Lauretis Fund
 John Tornquist
 Tornquist Family Foundation
 The Valerie Friedman Fund
 Susan Wagner
 Lucy R. Waletzky, MD
 Connie Webb +
 Leslie Weinberg
 Richard Weintraub
 Joanne Weller
 Susan N. Wilson
 Hon. Sen. Timothy Endicott and Wren Wirth

Circle of Hope (\$1,000+)

Anonymous (60)
 Henry Jacob Aaron Ph.D. and Ruth Aaron
 Elaine Aarsand
 Jerome Abeles
 Dr. Ellen Abell +
 Barbara Abramson
 Marc F. Abramson, M.D.
 Thomas Abrunzo
 Bruce and Susan Ackerman
 Sandra Adams
 The Adams Giving Fund
 Richard Adelaar
 The Adelaar Foundation
 The Agape Fund
 Dr. Amefil Agbayani

Kathryn Newsome Ahlport
 Jeanette Ainsworth *
 Lawrence and Wendy Aldrich
 Larry and Wendy Aldrich Family Fund
 Patricia Allard
 Kathryn Allen
 Sharon Allen
 Miriam Alper
 AmazonSmile
 The American Gift Fund
 Rickard Amundsen
 Eve Anderson
 Elaine Andrews
 Woodbury and Cynthia Andrews
 Julie Andrus
 David Annis
 Valerie Anton
 Linda Appleton
 Mina Askari
 Teresa Audesirk +
 Carol Axelrod
 B. N. Y. Mellon Charitable Gift Fund
 Mary Bachman and William Downing
 Nathan Bachman
 The Bachman Foundation
 Dr. William Baird and Dr. Samera Baird
 Sen. Rosalyn Baker
 Michael and Donna Bales
 Baltimore Community Foundation
 Leonard Banalett
 Jean and Ned Bandler
 Dr. Chandana Banerjee and Mr. Sanjit Mahanti
 Carol M. Barger and William D. Elliot
 Clay Barr
 Pamela Barsam Brown
 Steedman Bass
 Gail D. Bassin Foundation
 Rebecca Baybrook
 Virginia and Rob Bayless
 Robert Bayless
 Tom Beauchamp and Ruth Faden
 Stanley Becchetti
 Judith Becke
 David Becker and Leslie Seeman
 The Charles J. Becker Charitable Fund
 Brett Beckfield and Gloria Thomas
 Barbara and Samuel Beeler
 Janice Belden
 Dennis Belgard
 Donald and Pamela Bell
 The Morris S. & Florence H. Bender Foundation
 The Ann B. Bennett Gift Fund
 Ann Bennett
 Sandra Berger
 Susanna Bergtold
 Larry and Kathryn Berkbigler
 Joan and Ira Berkowitz
 Berkshire Taconic Community Foundation
 Trish and Jeff Bernstein
 Eleanor and Richard Berry
 Pongsuwan Bilmes
 Jim and Lucinda Bisdroff
 Lora Blaine

Eleanor Blake	Katharine Chace	Harriet Denison	Kim Farinsky and Kenneth Farinsky	Jaswant Singh Gill	Aubrey Hawk
Constance Ann Blau	Malca and Barry Chall	Dr. Janet Denlinger	Bill and Kathy Farley	Gill Family Trust	Barbara Hawkins and Stephen Singer
Carolyn Blum	Bob Chambers	The Denver Foundation	Anne Faulkner	Wayne Gilmour	Dr. Joanne Hawkins
George S. Bobinski Sr.	Merle C. Chambers	Martine Derom	Dr. Barry Feldman and Fern Feldman	Joanne and James Giza	Liz and Van Hawm
Joan Bodenlos	William Chambers	Hon. John Despres and Gina Despres	Richard Feldman	Ann Glucroft	Nancy J. Haynes
Gail Boggs	Louis Chandler	Stephen and Nola Deutsch	Alan Ferber	Edward Gogol, J.D. +	Marcia Heller
The Gail L. Boggs Family Charitable Fund	Roy and Carolyn Chapel	The Stephen and Nola Deutsch Charitable Trust	Carol Fey	Robin Gold	Hemmer
Sue and Ben Boley	Dr. Mim Chapman	Edith De Vincenzi	Donald and Diane Fike	Paul Golding	The Hendricks Family Fund
Harold and Nancy Bolton	Robert Cheek	Kathleen Diak	Catherine Fike	Goldman Sachs Philanthropy Fund	Geraldine Herbert
Minyon Bond	Chicago Community Trust	Daniel Diaz	Findley Family Charitable Fund	Ellen M. Golub Charitable Foundation	Diane M. Herrmann
Linda Borders and Vaughn Hasslein	Jean Clark	Tom Dietvorst and Virginia Berkeley	Sharon and Richard Fish	Linda Good and William Elfring	Jeffrey Hersk
Susan Boren and Steve King	Inge Clarke	Berry Dilley	Linda Fish	The Good Elf Fund	Hersk Family Fund
Karen Borman	Jane Scott Cleary	R. Steven Dimeo	Cynthia Fisher	Myra and Andrew Goodman	Louis Herskowitz
Ariel Borten	Frances Close	The Do Good Fund	Jonathan Fisher	Barbara Goodman	Dr. Steve and Ms. Karen Herwig
Boston Foundation	Robert Coffland and Ellen Moore	Steve and Judy Dobson	Stephen Fisher	Jack Goodman	Sandra D. Hess
Dr. William Bouma	Jeffrey Cole	Mary Doering	The Stephen and Christine Fisher Charitable Fund	Nancy Goodman	Hickrill Foundation
Gloria and Ronald Bowman	Megan Cole	Amy Donenfeld	Harvey Fishman	The Richard Goodman Foundation	Josephine Hiers
Mary Boyd	Susan Colvin	Dan and Meg Donoghue Giving Account	Ellen Christine Flaherty	Carol Gordon	Ralph Higgs
Velma Boyer	Combined Jewish Philanthropies	Daniel and Margaret Donoghue	Lynne Flanders	Renee Gordon	Dr. Eileen Hilton and Dr. Len Rossoff
Daniel Branton	Jane Comer	Dr. John Downing	Harry Fleisch	James Gorman	Modesto 44
Linda Bratrud	The Community Foundation for Brevard	Frances Downing	Catherine Fleischner	The Gorman Family Foundation	Rebecca Hoblin
Jean Braun	The Community Foundation Sonoma County	Loretta Downs +	Frannie Fleishhacker	Peggy Gourley	Gerry Hodes
Dr. Arthur Breipohl and Mrs. Shirley Breipohl	David Compton	Shannon Downs	Yolanda Fletcher	John Graves and Dennis Lonergan	Diane Hodun
Elizabeth Brody	Faith Comstock	The Christine Dreyfus Novotny Donor Advised Fund	Adrienne and David Fly	The Greater Cincinnati Foundation	Joanne Hogan
Edward Broesamle and Suzi Manara	Charlie Conklin	Elizabeth Driehaus	Mary Jane Fogle	The Greater Houston Community Foundation	Shirley Hogan
Carolyn H. Bronston	Connie's Charitable Account	Rabbi George B Driesen, JD and Sue Dreisen	Miriam Fond	Greater Toledo Community Foundation	Jane and Ronald Hoover
Charlene Broudy	Linzee Coolidge	James Dryden and Stephanie Koonz	Victoria Ford	Neal Green	Terry and Mark Hougen
Michele Brouqua	Jane Coon	Steve and Miriam Dubin	John Forsgren	Steven and Mary Greenfield	Dr. Larry Hungerford and Ms. Susan Hungerford
Donald and Mary Ann Brown	Bill and Kristen Cooney	Louisa Duemling	Jermey Foszcz and Family	Dustin and Gale Griffin	Doris Hunker
Jean and Stuart Brown	Connee and Charles Fuller Cowles	Jill Duggan	Frank Foulkes	Frank Grobman	The Dan and Irene Hunter Fund
Thomas Brown and Wendy Warren	Kimberly Cox	Joan Dukes	The Foundation for Human Conservation	Dr. Martha Gross	William and Barbara Hyland
Carol Browning	Michelle Craven	Kathleen and Thomas Dunphy	Amanda Fox	Carolyn Grossner	Innovia Foundation
Jane Bryan-Jones	Candi Crichton	Dr. Linda E. Durham	Lynda Fox	Margaret Gumpertz	Anita S. Isch
The Jane Bryan-Jones Fund	Margaret O. Cromwell Family Fund	Nancy Durr	Fox Family Charitable Gift Foundation	Susan Gunderson	The J. F. S. Giving Fund
Alice and Lance Buhl	David and Kitty Crosby	Daniel Duryea	Ann Fragala	Rahtindra Das Gupta	J. Kadowaki, Inc
Margaret Bunce	Michael Cross	Dona Early	Bruce and Kate Frederick	Pamela Gurnari	Roy H. Jablonka
Georgia and Stephen Bupp	Dr. Richard R. Crowder	JoAnne and Shelley Earp	Leonard Freeman	Linda Haas	Amber Jackson
Cheryl Burke and Alan Weiss	Virginia Cumming	East Bay Community Foundation	Sally Freund	Hagler Family Fund	Frederick L. Jacobson
Patricia Burness	Bruce Cunningham	Peter Eaton	Morris Friedell	Lois Hall	Lynn Jacobson
Mark and Janet Burns	James Curry	Lois Eckhoff	The Morris F. Friedell Fund	Martha Hall	Rusty and John Jagers
Virginia Bush	Stan Curtis and Ann Childers	Martha Ehrenfeld and Carla McKay	Paul and Shirley Friedland	Bobbie Hallig +	Josephine Janson
Kathy Butler	Laura Dale	Eidolon Communications	Bonnie Denmark Friedman	Kristina Halvorson	Joseph and Jeanne Jehl
Jane H. Cadwallader	Veronica Daly	Robert Ekman	Karen Dean Fritts	Aaron Hamburger	Jehl Family Gift Fund
Bradley Calcagni	Dianne Daniels	Dolores Elliott	Cathy and Paul Fulton	Anne Hammond	Sandra Jennings *
James Call and Kris Conquergood	Thomas and Joan Davenport	Penny Engel +	The Maurice and Muriel Fulton Foundation Fund	Robin Hanes	Ava Jensen
Nancy Callahan	Davenport Family Charitable Gift Fund	Ralph and Diane Engel	The Fund for Charitable Giving at P.N.C. Asset Management	Stephanie Jean Hannaford and Dr. Christine Witzel	Jewish Community Federation and Endowment Fund
Connie and Jack Callinan	Richard Davey and Nancy Hubbard	Joan and Edwin Engelhaupt +	Caroline Gabel	Sheila and Michael Hannah	The Jimcrab Charitable Fund for Charitable Giving
Joan Caly	The Richard J. Davey Charitable Fund	Dr. Barbara Engler	Sean and Mary Gallivan	Dr. James Hannum and Sandra Hannum	Robert and Patricia Johnson
The Calypso Fund	Claudia Davidoff and Joseph Kahan	Justine Englert	Frederica Gamble	Bruce Hansen	Mike Johnson
Janice and James Campbell	Ronald Davis and Karen Starleaf *	Jean Entine	Linda Garbe	Martha Hansen	Thomas Johnson
Sara L. Cannon	Clark Davis	Dr. Mark Epstein	Loraine Gardner and Daniel Dolgin	Kristi and Robert Hardin Jr.	Holly and Bruce Johnstone
Alan Carlson	Douglas and Wendy Dayton Foundation	Dr. Richard Epstein	Judith Gass	The Hardin Family Gift Fund	Jessie Jonas
Janet Carpenter	Dayton Foundation Depository INC	Marilyn Epstein *	Peter Gates	Bill Harris	Deborah Jones
Judith Carroll	William and Valerie De Priest	Diana Erbsen Esq.	Robert Geisler and Mary Schoonover	Leo Harris	Karen Kallay
Linda Carrozza	The De Priest Family Charitable Fund	Lyn Erickson	Dr. John Geisse and Lisa Geisse	Lisa Harris	Stephen Kaloyanides Jr.
John Carswell	Florence De Rose	Sheldon Evans and Martha McMaster	Dr. David Gelfand and Dr. Ellen Daniell	Sally Harris	The Alice and Allan Kaplan Philanthropic Fund
Shelley and Rich Casey +	Gerald De Santillana	Donna Layton Evans	Marion and Whitney Gerard	The William H. and Mattie Wattis Harris Foundation	Alice Kaplan
The Casper Naumes Fund	De Santillana Giving Fund	Tom and Elisabeth Everett +	Thomas Germack	Ellen Harrison	Stuart Kaplan
Ron and Jane Cease	Linda and Scott Deacon	John Faith, US Army, Retired	Adrienne Germain	The Harrison Charitable Fund	Barbara Karth
Vincent Ceci	Lisa and Bruce Deal	Birte and Jim Falconer	Jess Gersky	Preston Haskell	Jean Kates
Central Indiana Community Foundation	Drs. Philip and Linda Dean	Fran and James Falender	Jo Ann Gilbert	Hawai'i Community Foundation	Judy Katz
Prof. Kathy Cerminara +	George and Mickey Deike	Richard and Ronni Fallows			
George Cervenka	The Nelson B. Delavan Foundation				

Jonathan Kaufelt and Holly Corn
 Judy Heymann Kazan and Steven Kazan
 The Kazan McClain Partners' Foundation
 Patricia Kealoha
 Nancy Keane
 Elodie Keene
 Karen S. Keeran
 John Kelly
 Patricia H. Kelso
 The Louis and Patricia Kelso Trust
 Dr. Amika Kemmler-Ernst
 Ann R. Kempees
 Gladys Kessler
 Betsey Kilmartin
 Diana and Neil King
 Charles King
 Douglas and Elizabeth Kinney
 Margaret Kinney
 Marianne Kipper and Dr. Richard Kipper
 Patricia Klein +
 Barbara Klein
 Allan Kluber
 Dr. Ellen Klutznick
 Ellen Klutznick Giving Account
 Paula Knickerbocker +
 Doris Knight
 The Knoppers-McCormack Gift Fund
 Walter and Constance Kobalka
 Dana and Ray Koch
 Ralph Koldinger
 Ursula Korneitchook
 Susan and Walter Koroljow
 Dr. Rose Kovelesky
 Peter and Judy Kovler
 Kovler Family Foundation
 Janice Kramer
 Marie Krause
 Rachel Kretser
 Dr. Merle Kroop
 Margaret Kruse and Richard Cloutier
 The L. B. K. Legacy Fund
 The L. S. L. Fund
 The La Crosse Community Foundation
 Carol La Pierre
 Leanne Lachman
 Marilyn LaCourt
 Robert and Jane Ladner
 Lake Group Media, Inc.
 Marti Lamar
 Lisa Watson Lambert
 Rebecca Lambert
 Linda Lampkin
 Hilary Lander
 Brenda Landis
 Samuel O. Lane
 M.C. Lang
 Alma Lantz
 Sandy S. Larson
 Caryl Lasko
 Dr. Andrew Leavitt
 Christopher Lecosia
 Stephen Lee and Barbara Coombs Lee
 Rodney Lehman

Linda Lemmon
 Susan Lemoine
 The Lenfestey Family Foundation Inc.
 Helaine Lerner
 Lillian Lessler
 Gayle Leventhal
 Debra Levin
 Fred Levin
 Robert and Barbara Levine
 Diane Levine
 Eleanor Roberts Lewis
 Robert Lewis
 Renae Lillie
 The Limerick Foundation
 Corinne and Matthew Lindenfelder
 Donor Advised Fund
 Julie Lindholm
 Marty Linsky and Lynn Staley
 Neal Lischner
 Sharon Litsky and John Sampson
 Angela Little
 Michael Lloyd
 Sandra Long
 Anne Long
 The John and Sandra Long Charitable Fund
 Neal Longanbach
 John and Jane Loose
 Joanne Lotreck
 Warren and Denise Loveland
 The Warren and Denise Loveland Family Fund
 Jeffrey and Pamela Lovinger
 Carla and Dave Low
 Rosamond Lownes
 Susan Lowry
 David Lucas, M.D. and Peggy Lucas
 The Lucy and Emanuel Donor Advised Fund
 The Lucy Fund
 Sarah and Kirk Ludwig
 Gordon Lund
 Dr. Peter Lupsha and Ursula Hill
 Robert and Jeanne Lurie
 Richard and Gemma Lury
 Frances Lyle
 Leland Lynch and Terry Saario
 The M. and F. Philanthropic Fund
 Marsha Macey
 Patricia Macholl
 Tina MacIntyre
 Harvey and Austina Maclary
 Virginia and Bruce Maclary
 Donald and Marjorie * MacLean
 The Macmillen Family Fund
 Arthur & Anna Mae Paulsen Foundation
 Drue Magee
 Michael Maier and Mary Chaney
 Kimberly Maine
 Mr. and Mrs. Peter Malkin
 Valerie M. G. Mallace
 Melissa Maloney
 Barrett Mandel
 Elizabeth Marcus *
 David Maren
 Victoria Marone

The Patricia Marriott and Leonard Yool
 Charitable Fund
 Sandra Marsh
 Ann Marshall
 Jennifer Martin
 Emy and Marcello Mastrocola
 Rick and Linda Maxson
 Margot Mazeau
 David McCammon
 Catherine McCollum +
 McConnell Family Fund
 Robert McCrae and William Newhall
 Jane * and Tim McCullough
 Martha McFadden
 Dick and Joyce * McFarland
 Frances McKenzie
 Richard McLane
 The McMaster-Evans Fund
 Robert Meade
 Kathy Meherin
 Peter Mele
 Toni Merrick
 Jay Hughes and Jackie Merrill
 Roslyn and Jerome Meyer
 The Meyler Rathke Charitable Fund
 The Miami Foundation for a Greater Miami
 Molly Miceli
 Betsy Michel
 Mark Michelson
 Hani Miletski and Arthur Goldberg
 Dr. Larry Miller
 Kristie Miller
 Mardith Schuetz Miller
 Tollie Miller
 Richard Miller Trust
 Frank and Charlene Millheim
 Frederick Millhiser
 The Frederick Millhiser Charitable Fund
 Rae Tyler Millman
 Kathleen Mills
 Brenda and George Milum
 Louise Milyko
 Julian and Ann Minghi
 The Minnesota Chapter 2021 Fundraiser
 Pam Woodley and Perry Mitchell
 Joan Mitchell
 Lucy C. Mitchell, The Longview Foundation
 The Molly Lou Fund
 Janis Montgomery-Jones
 John Moody and Jo Moody
 John Moore and Elena Goldstein
 Anne Moore
 Dian Moore
 Robert Moore
 Chuck and Melinda Moos
 Paul F. Morgan
 Karen Morin, RN, LA Patient Advocates
 William Moroney
 Wendy Morrell
 Judy and Bill Morton
 Joan Mudd
 Dorey Munch
 Pamela Munn

Christy and John Murchison
 Jerre S. Musser
 Dr. Roger Muzii
 Jane and Robert Nagel
 Joan Natali
 Audrey and Edward Naumes
 Connie Neish
 Carolyn Neketin
 Matthew Nelson and Kip Beardsley
 Stan and Adella Nemer
 The Neptune-Bell Foundation LLC
 New York Community Trust
 The Jim and Sally Newell Charitable Fund
 Audre and Roger Newman
 Clare Nichols
 Robbie Nicol
 Dr. Arthur Nielsen and Sheila Nielsen
 J. Christopher Nielsen
 Alan and Valerie Nies
 Evan Nison
 Nison Donor Advised Fund
 David Noorthoek *
 Jeannie and Bruce Nordstrom
 Wilda Northrop
 Melissa and David Norton
 Gloria Nussbaum
 Gloria Rathburn Nussbaum Living Trust
 Peggy Y. C. O'Connor
 Zoë Oka
 Dr. and Mrs. Hardy Oliver
 On Purpose
 Orchard House Foundation
 David and Laura Ostheimer
 The Rev. David W. Otto and Mary K. Otto
 Charles Owen
 David E. Owens
 Abbi Packer
 The Padosi Foundation
 David and Lee Page
 Alicia Page
 Lee P. and David N. Page Fund
 Double E Foundation
 Autumn Palik
 Panwy Foundation, Inc.
 Jo Pappas
 Ann and Don Parfet
 Michael Pargee
 Kristina Patterson
 Dr. Richard Paull
 Fiona Pearce +
 Roger Peck
 Michelle Peel
 Chaplain (Col) Marion Pember
 David Pendleton
 Anne Pennington
 Barbara Perreault
 Drs. Robert and Veronica * Petersen
 Judy and Darold Peterson
 Mary and Stephen Peth
 Dr. Robin Petty
 Pew Charitable Trust
 Theodore and Elizabeth Peyton
 Ursula Pfeffer

The Carol K. Pforzheimer and
 Carl A. Pforzheimer Fund
 Zelie and Carl A. Pforzheimer
 Kira Philips
 Dorothy Phillips
 Patricia and Thomas Pinkos
 Louise Plank
 Dr. David Plimpton and Susan Plimpton
 Rodney Plimpton
 The R. B. Plimpton Giving Fund
 Duane Polzien
 Joan G. Poole
 Mary Pope
 Lester Poretsky Family Foundation Inc.
 Louisa C. Porter
 Ellen Posel
 Posner-Wallace Foundation
 Teresa Powell
 Thomas Powell
 Lutz Alexander Prager and Patricia Lark
 David S. Pratt, M.D., MPH
 Donald Press
 Rebecca Preston
 The D. and R. Price Fund
 Diane and Richard Price
 Susan Prior and Bradley Smith
 Jill Prosky and James Posner
 The R. H. & A. Q. Lawe Foundation
 Diane Radcliffe
 Melvin and Dolores Raff
 Kathleen Rainen
 Jeffrey Rathke and Maria Meyler
 Joan Ray
 Raynie Foundation
 Gene Record
 Bernard Reder *
 Margaret Phelan Reed
 Sally Reeves
 Tom and Lana Reichert
 Jackie Relaford
 Stacey and Bernard Renger
 Felix Reyes
 Mary Rhodes
 George Riedl
 Melissa Riparetti-Stepien
 Shaunagh G. Robbins
 Richard and Jean Roberts
 Robertson Family Fund of SEI Giving Fund
 Barry Rockwell
 The John A. Rodger, Jr. Foundation
 Marlene Roeder
 Kenneth and Beth Roering
 Gerald Rolfe
 Ellen and Kenneth Roman
 Mary Clark Romney
 Jerry Rooke
 Hon. Selwa Roosevelt
 The Adam Rose Foundation
 Adam R. Rose
 Col. Charles Rose
 Dr. Yale Rosen
 Joan Rosenbaum
 The Joan and Paul Rosenbaum Fund

Lawrence Rosenberg
 Peter and Beth Rosenthal
 Dr. William Ross
 Christopher Rossetti
 The Leonard Rossoff and Eileen Hilton
 Donor Advised Fund
 Dee and Allan Roth
 Lois and Arthur Roth
 Dr. Marc Rothstein
 Shirley Rothwell
 William and Angela Rowe
 Mearle and Allan Roy
 Donald Royer
 Robert and Louise Rozanski
 Evelynne Renee Rozner
 Sara Ruby
 Claudia Ruchar
 Anita Rufus
 James Rupke
 Dr. Anthony Russell
 Thomas D. and Judith F. Rutherford
 Heather Rutner
 Jerry and Joyce Sachs
 Catherine Samuels +
 Judith Sandalow
 The Judith Sandalow Giving Fund
 Evelyn Sandground and Bill Perkins
 The Santa Fe Boys Fund
 Santa Fe Community Foundation
 The Sarah Rodgers Fund
 Carol Ann Sawyer
 Peggy Scantland
 Lawrence Schall
 Fred Schanberger
 Thomas Schantz
 Kristin Scharf and John Michopoulos
 Joyce Scheffey
 Jane Scheidecker and Duane Partain
 Nancy Schlegel
 Dr. Charles Schmitz
 Peter Schneider
 Joseph Schoenberg +
 Taylor Schollmaier and Kimberly Schollmaier
 Schollmaier Family Fund
 The Carol A. Schreter Gift Fund
 Nancy Schulein
 The Nancy and Robert Schulein Fund
 Peter and Susan Schultz
 Nancy and Stephen Schwartz
 Eric Schwartz
 Julie Schwartz
 The Stephen B. Schwartz Trust
 Joanne Schwarz
 Bill and Sharon Schwarze
 John Segall and Reva Segall
 Patricia Smitson Sehnert
 SEI Giving Fund
 Randee Seiger
 Seiger Family Donor Advised Fund
 Dr. Wesley Seitz
 Dr. Maxine Seller
 Carole Shannon
 Julie Shaperman

Gary Shapiro
 Renetta Shapiro
 Gary Shapiro Fund
 Robbie and Richard Shell
 Joshua Shleien
 Rev. Madison T. Shockley II and
 Mrs. Gayle Shockley
 Sylvia and Bob Shrauger
 Susanne Shutz
 Wendy Sidley
 Anne Silverman
 Gary and Julie Simon
 Bonnie Ward Simon
 William Albert Simpson
 Paul Slater
 Linda and Evan Smith
 Alexandra White Smith
 Nancy Snyder and Adolf Karaska
 Dona Sommers and Peter Haydu
 Charles and Sondra Sonneborn
 Nils Sorensen
 Sara Hamel and Wesley Sowers
 Susan Spencer
 Dr. Stephen Sperber and Roberta Silverstein
 Cyrus Spurlino
 Kieth Stanley
 Julia Stasch
 State Farm Companies Foundation
 Mary Steele and Raymond Nienburg
 Kenneth Steiner
 The Steinert Family
 Kathleen Stephenson-Kuhn
 Ernest and Zina Stern
 Edith Stern
 Susan Stern
 The Zina and Ernest Stern Foundation
 Stifel Charitable Inc.
 Suzanne Stiller
 Verena Stocker
 The Stone Robinson Giving Fund
 Richard Storrs
 Lanse Stover
 Dr. Michael J. Strauss and Dr. Molly Strauss
 The Strauss Family Charitable Fund
 Dennis Streveler
 The Connie Strickland Webb Family Foundation
 Dr. Marian Stuart
 The Marian R. Stuart Ph.D. Foundation
 Christine Suppes
 Ronald and Carmen Suter
 Bryce and Carol Swiler
 Eleanor Sylvestro and David Sylvestro
 The Ingersoll Sylvestro Charitable Fund
 T. Rowe Price
 James Tabor
 Carol and Lee Tager
 Dr. Ellen Tarlow
 Evelyn M. and James C. Taylor
 Hugh Taylor
 John Templeton Sr.
 Lucy and David Terry
 The Lucille H. and David M. Terry Living Trust
 Caroline Terwilliger

Eileen Eileen
 Dr. Barbara Thacher Plimpton
 David and Jodi Thomas
 Pasha and Laney Thornton
 Teresa and Alan Thornton
 Virginia Thresh
 Dr. Mark Thurmond and Audrey Thurmond
 Thurston Charitable Foundation
 Roger Tiemann
 Jerry Tigges
 Dr. Brian Tinsley
 Hon. Carolyn Titus
 Dr. Jonathan Tobert
 Frank Tobin and Ilene Chester
 Dr. Barbara Toepfen-Sprigg
 Karen and Alex Tomoff
 Amy and Michael Toole
 Mike and Amy Toole Fund
 Ed Waldrup and Dyann Tresenfeld
 The Tresenfeld-Waldrup Philanthropic Fund
 Triangle Community Foundation, Inc.
 Gail Triggs
 The Triggs Family Charitable Fund
 Sarah Trimble
 Valerie Trotman
 Vickie Trott
 Dr. Jerry Avorn and Karen Tucker
 Gloria Turgeson
 Remus Turner Jr.
 United Way of Central New Mexico
 United Way of Central Oregon
 United Way of Rhode Island
 United Way of Washtenaw County
 Karin Urban
 Richard Urell
 Dale Valentine
 Valerie Van Dam Kelleher
 Nancy and Peter Van Roekens
 Foundation for Human Conservation
 Dr. L. Jr. and Marion Van Winkle
 The Venus Bestow 2 Fund
 Sarah Vigoda
 Philippe and Katherine Villers
 Bambi Vincent
 Betsy and Paul Von Kuster
 Johanna Von Mayr
 Deborah Vonarx and Richard Vonarx
 Tom Wallace Lyons
 John Walsh
 Terri Walsh
 Michael Ware
 Sharran Warren
 The Wendy W. Warren Charitable Fund
 Patricia and Darwin Wassink
 The Ray and Elsa Watson Charitable Fund
 Tom Waymire
 Joseph O. and Geraldine C. Waymire Fund
 Peggy Weber and Bob Whitlock
 Hartley and Benson Webster
 Eric Webster
 The Hartley and Benson Webster
 Donor Advised Fund
 Norman Weeks

Frank and Denie Weil
 Deborah Holt Weil
 Patricia Weiland
 Dr. Walter Weiss and Dr. Susan Okie
 The Alan Weiss Charitable Fund
 Fredric Weiss
 Alan and Fani Weissman
 The Elizabeth May Buffington Wende Fund
 Brian and Hannah Werth
 Western North Carolina Community Foundation
 Erlend Weydahl
 Frank and Nannie Wezniak
 Camille and Ronnie Wheeler
 Whispering Bells Foundation
 Janice and Michael Whitacre
 Harold White
 Dr. Marshall Whiting
 Elizabeth and Bradley Whitman
 Charles Whitten and Jonathan Gillentine
 Cynthia Wilcox
 Mireille Wilkinson
 The Wilkinson Foundation
 Thomas Williams
 Barbara Willson
 Eleanor and Fred Winston,
 Longview Foundation
 The Winston-Salem Foundation
 Susan and Ken Wisser
 Carol Witt *
 Dr. Michael C. Wolf
 Jimmie and Joyce Woods
 Thomas Woods
 The Workman Family
 Kelly Wright
 Lindsay Wright
 Margaret Stevens
 Christopher Wurtele
 The Yalom Family Fund
 Dr. Elaine Yamaguchi
 Elaine Yamaguchi Rev. Living Trust
 Sylvia and Joey Yasgur
 Richard Yocum
 Dr. Wende Young
 Linda Young
 Jeff Yunis
 Majid Zarrinkelk
 Susan and Werner Zehnder
 Gary and Linda Zellerbach
 Suzanne and Stephen Zimmerman
 The Margot Zimmerman Fund
 Karen Zupko

The Legacy Circle honors donors who have created a planned gift for Compassion & Choices. (July 1, 2021–June 30, 2022)

Legacy Circle Members

Anonymous (95)
 Joyce Abbott Ph.D. *
 Linda Abrams
 Roberta Adlington
 Bart Agliodoro
 Nanci Albertson
 Fred Alleman *
 Ann Allen
 Judith Amstutz
 Ann Anderson
 Julie Anderson
 Lorraine Anderson
 Mary Anderson
 Paul Anderson
 Jacob Appleman
 Janice Arnett
 Susan Arthur
 David Athons
 Karen Austin
 Virginia Bachman
 Ruth Bailey
 Santana Bailey
 James Bajko
 Phyllis Balmat
 Kathleen Bambeck
 Beth Barrett
 Susan Barry
 Sandra Bartlett
 L. E. Bassler
 Jo Anne Baughan *
 James Baum
 Marcia Baum
 Tom Beaman
 Terry Bean
 Stanley Beattie
 Maris Beckerman
 Susan Befeler
 Harumi Befu
 Gordon Bell
 Robin Bendler
 David Benjamin
 Magnus Bennedsen *
 Owen Benthin * ∞
 Sharon Lillian Bentz
 Barbara Bentzin
 Janet Bergman
 Jeffrey Berman
 Judith Berman
 Lyn Berner
 Leslie Biggs
 Diane Bingham
 Joan Bitar
 Gail Blakeley

Kathleen Blank *
 Karen Blecker
 Karen Bleuel
 Joyanne Bloom ∞
 Elana Bluestone
 Sonia Bob *
 Patricia Bobbing
 A. Boelte
 Carol Boerer
 Dr. Carol Boerner
 Dr. Adelyn Bonin
 Penny Borda
 Susan Boughn
 Antoinette Bower ∞
 Dr. Dorothy Bracey
 Dr. H. Leon Bradlow *
 Hattie Bradlow *
 Celia Brandt
 Doris Braun
 Dr. Tamara Brenner
 David Brodahl
 Harvey Broodno
 Norm Brooks
 Clifford Browder ∞
 Carole Brown
 Sylvia Brown
 Marilyn Bruno
 Dr. Brush
 Sylvia Buchholz
 Joseph Buckwalter
 Margaret Bunce
 Terry Buntrock *
 James Burger
 Edward Burnham
 Kathleen Burnham
 Ann Bury
 Susan Caffarel
 Caron Caligor
 Kimberly Callinan
 Natalie Campbell *
 Jennifer Capps
 Diane Carlin
 Beth Carpenter
 Fred Carr
 Ramona Carson ∞
 Joanne Elizabeth Carter-Yount
 Regula Case
 Linda Chambers
 Louis Chandler
 Maxwell Chaplin *
 Elaine Charney

Robert Cheek
 Dr. Clair Cheer
 Dr. Edith Cheitman
 Jane Chirurg
 Paul Chodroff *
 Margaret Chrisman
 Sandra Lee Church
 Fay Clayton
 Melinda Cogen
 Warren Cohen
 Daniel Collins
 Grace Conlee-Micetich
 Janet Conn
 Peggy Conroy
 Pat Conway
 David Cook
 Anne Cooke
 Judy Coons
 Joann Corey *
 Bessie Cornelius
 John Corwin
 Jan Cowan
 Dr. George Crispo
 Cora Sue Cronemeyer *
 John Cross
 Nora Culver
 Susan Cummings
 Charles Curry
 Mrs Susan Curry
 Audrey Curtis
 Esther Curtwright
 Nan Dale
 Bert Davis *
 Diane Davis
 Craig Dawson *
 Stella Dawson
 Mary DeBeer
 Michael Debelak
 Shulamit Decktor
 Steve Denner
 Edith DeVincenzi
 Ursula Dewitt
 Ramon Dezutter
 Kathleen Diak
 Gloria Dintelman
 Alison Ditzen *
 Charles Donnel Jr.
 Duane Dossinger *
 Dr. Garner Downey *
 Loretta Downs
 Robert Drews

SYMBOL KEY

∞ Charitable gift annuity

* Deceased

Donna Drinkwater
Jane Dunham
Freda Dunn *
Suzanne Dupre *
Diane Dwyer
Lawrence Eden
William Edgar
Dr. Barbara Eisenstadt
Carol Elkins
Kristin Erickson
Jean Esser *
Elisabeth Everett
Don Faber
Alan Face
Beverly Facile
Theresa Farrah
Cynthia Faunce *
Dr. Elsa Feher
Marlin Feldman
Angel Ferrer
Norman Fidelman *
Blair Fielding
Catherine Fike
Elizabeth Finch
Jacques Fitch ∞
Stewart Florsheim
Elaine Fong
David Ford
Wendy Foxworth
Barbara Franch
Robby Frank
Helena Fraser *
Bebe Roberts Freeman
Kyle Freeman
Diane Freethy
Aimee Fried
Valerie Friedman
Faye Friedrich
Genia Friend
Judith Frisone
Ms. Elaine Fung
Warren Furman
Judith Futch
Janet Gaffney
Claire Galkowski
Stephanie Garber
Suzanne Gardon *
Elizabeth Garnholz
Bernice Garnick
Dr. Nina Garrett
Kenneth Gaskins
Eugene Govinda Gauggel
David Geisinger *
Douglas Geisler
Claire Geller-Kolchetski
Madeleine Gersh
Jess Gersky
Hugh Giblin
Elaine Gilbert
Alexander Gilberts
Dorothy Gilberts
Dr. Faye Girsh ∞
Phyllis Girvetz

Claudette Glenn
Deborah Glottman
David Glynn
Jill Godmilow
Michael Goodman
Daniel Gorman
Laura Gould
Anita Greenberg
Dr. Gilda Greenberg * ∞
Dr. Mimi Greenberg *
Polly Greenberg
Susan Greenberg
Shawna Greene
John Gregory
Amy Griboff
Doris Grieder
George Griffin Jr.
Charles Gross
Dan Grossman
Dick Grum
Kathleen Gueymard
Barbara Haines *
Richard Hall
Rhyena Halpern ∞
Susan Hamburger
Ruth Hand
Tara Hands
Kathy Hanke
S. Hapitas
Janice Harman
Jim Harnden
Dorothy Harrigan
Nancy Harris
Kay Harry
Jeannine Harvey
Dr. Joanne Hawkins
Christine Hayes
Elizabeth Henderson
Constance Hendrickson
Christine Henry
Thomas Herlihy III
Rabbi Miriam Herscher
Lydia Hillebrand
Marian Hills *
Danell Hiltz
Robert Hodge
Rosina Hodge
Deborah Hoffman
Mary Holland
Rev. Edward Holland
Joyce Homan
Joan Salty Honcharik
Rev. Glenda Hope
Constance Howard
Nancy Hoyt
Barbara Hrua
Mary Hudson *
Linda Huebner
Jacqueline Hughes ∞
Stephen Hut Jr.
George Hutchinson
Leigh Hutchinson
Wallace Hyman

Dr. Charlotte Ikels
Douglas Inglis
Laura Ingram
Joseph Itiel
Delaney Jack
Estelle Jacobs
Marilyn Janssen
Ida Denise Jenkins
Richard Jeroloman *
Dr. Edward Jervey ∞
Amy Johnson
Beverly Johnson
Dallas Johnson
Ray Johnson Jr.
Dr. Hugh Johnston
Celeste Johnstone
James Johnstone
Chris Jones
Elliott Jones
Shirley Jordan *
Marlene Joy
A. Kabus
Helene Kafka *
T.R. Kaiser
Sally Kaplan *
William Kaplan
Sharon Kapnick
Gloria Karlson *
Suzanne Keers
Marion Kelemen *
Dr. Earl Kendall
Denise Kennedy
Leo Kesselman
Piruz Khorvash
Louise Kieffer ∞
June Killackey
Kelli-Jo Kipp
Ingrid Kloke
Dana and Ray Koch
David Korts
Bonnie Kramer
Judith Kramer
Phil Kur
Rose Lakatos
Herbert Lambert
Dr. Dan Lammertse
Dr. Barry Lamont
Bernice Langner
Jane Lanham ∞
Lawrence LaPierre
David Lavalley
George Lavenia
Professor Sylvia Law
Daniel Lednicer *
Penelope Lehman
Robert Leigh
Nancy Leite ∞
Roger Leonard
Lillian Lessler
Arleene Lettiere *
Karen Levenback
John Levy
Mabel Liang

Dr. Leonard Lipman M.D.
Marjorie Little
Dan Littman
Claire Liversidge
Joanne Lotreck
Dr. Karen Love
Stella Luftig
Janet Lund
Lillian Lynch
Scott Lyndberg
Virginia Lyon
Karen MacArthur *
Walter Mahoney ∞
Bill Majeski Jr.
Mimi Manners
Heather Mansfield
Elizabeth Marcus *
Elaine Marcuse *
Donald Margolis
Victoria Marone
Dorothy Marsh
Miss Sunny Martin ∞
Stephen May *
Charlotte Mayerson
Carole Maynard
Ana Mayse
Margot Mazeau ∞
Virginia McArthur ∞
Lauretta McCabe
Joanna McClure
Rev. Dr. Margaret McCray
Susan McCullough
Rosa McCurdy
Karen McDowell
Joseph McEwen
O. McFarland
Shannon McGlathery
Tamara McGlathery
Lanny McGrew ∞
H. Jo McKinley
Joan McLaughlin
Carmalita McMullen
Ray McMullen
Timothy McNally
Jerome Medalie *
Barbara Meislin, The Purple Lady
Chris Merlier
Patricia Merriman
Irene Meulemans *
John Micetich
Mickey Michaels
Sharon Miles
Clarke Miller
Laurel Miller
Linda Jean Miller *
Dr. Bob Misbin
Kathryn Mitchell
Perry Mitchell
Pamela Moats
Robin Moler
L. E. Moore
Patricia Moore
Christopher Moos *

Karen Morgan *
Vida Morley
Shelley Moroff
Mary Moseley
The Rev Frank and Betsy Moss
Charlotte Mugnier *
Nancy Murphy
Thomas Nagy
Tom Neal
Lisa Nelson
William Nettles *
Allen Neuringer
Dr. R. R. Neuswanger
Jo Neuswanger
Dr. Leslie Newman
Richard Newman *
Dr. Irene A. Nichols *
Gordon Nicholson
Adrian Nielsen
Doris Nouzak
Sally Nunn
Franklin Nussbaum
Gloria Nussbaum ∞
Paul Nussbaum
Mary Ann A. Olsen
Muriel Olsen
Warren Olsen
Severo Ornstein
Valdene Ortiz
Charlotte Oser
Frances Owen
David Owens
Jean Owens
Mark Packard
Michael Pantaleoni
Elissa Parker
Harold Parker
Joan Parker
Margaret Parker
Roy Parks *
Kirsten Parrish
Susan Paulson
John Pedersen
Perry Peine
Evelyn R. Perl ∞
Phyllis Persicketti
Dr. Robin Petty
Craig Phillips
Herbert Phillips
Jane Phillips
Janet Phillips
Linda Pierce
Mary Pierce *
Frank Pipers
Kimberley Pittman-Schulz
Donald Pockek
Miriam Pollack-Rehmar
Bill Pollock
Dr. Thaddeus Pope
Sue Porter
Dr. Lloyd Prezant *
Virginia Pringle
Helen Pross

Rajendra Pruthi
Karen Pye
Robert Raben
June Rabin
Bette Rainer
Miss Barbara Rankin
Marta Rapoport *
Dr. Tom Reichert
Ruth Reiser
Nancy Renaud
Dr. Susan Rice ∞
Dr. Lianne Richland
Patricia Richter
Dr. Audrey Riffenburgh
Marie Riley *
Margarita Rivera Swank
Joan Roberts
Sterling Robertson
Jean Robinson
James Rodell
Marlene Roeder
Richard Rogers
Mary Roland-Horn
Sondra Roldan
Helen Roman
Gary Rose *
Dr. Yale Rosen
Dr. Davida Rosenblum
Dr. Martita Rosenman
Elfriede Roth
Loren Roth
Linda Roth Platt
Eleanor Rothman
Dr. Leslie Rowley Ph.D.
Sandra Rowley ∞
Tracie Rowson
Marlene Rubins
Eric J. Ruby, M.D.
Betty Rupainis
Dr. Andrea Rushing
Bruce Russell
Rosemary Sacken L.C.S.W.
Barbara Sacks
Dr. Susan Safer
Deborah San Juan
Dianne Sanborn
Christie Sanders ∞
Mary Ann Sandersfeld *
Samantha B. Sandler
Deborah Sarnoff
Dr. Etta Saxe
Margarete Saylor
Connie Scharlau
Lyle Schauer ∞
Dr. Lawrence Schlatter
Teresa Schmidt
Joseph Schoenberg ∞
Robert Schuermann
Theodore Schultz
Fabian Schupper *
Charlotte Schwarz
Nancy Schwarzwalder
Daniel Schwimmer

Judith Scott
 Randilyn Scott
 Bruce Segal
 Rachel Sene
 Kathy Shamey
 Ina Shaughnessy
 Jerri Lea Shaw
 Merri Lea Shaw L.C.S.W.
 Robert Shaw Jr.
 Salila Shen
 Amy Sher
 James Sherman
 Sally Sherman *
 Stephanie Sherman
 Laura Shlien
 Angie Sieffert
 Margaret Simpson *
 Terry Singer
 Naomi Priscilla Slifkin
 Darwin Smith
 Elaine Smith ∞
 Elbert Smith
 James Smith
 Cecile Smull
 Dr. Sandra Snow
 Mark Sobel M.D., Ph.D. ∞
 Susan Solomon
 Madeline Sosebee
 Patricia Spangler
 Karen Speck
 Gary Spizizen
 Sondra Sprung
 Melissa Stacy
 Alan Stageberg
 Joan Staple ∞
 Marion Stelts
 Charles Stendig
 Ralph Stephens ∞
 Rhoda Stern
 Judy Stevens
 Roberta Stevens
 Prof. Jacqueline Stone
 Roberta Stone
 Lillian Stoner
 Marcia Streat * ∞
 Helen Studley
 Aleta Styers
 Alberta Sullivan
 Marcia Sundquist
 Jane Swicegood
 Rita Tancredi *
 Patricia Tangney
 Miss Christine Taraskiewicz
 Edith Thayer
 Eleanor Thede
 Kenneth Thede
 Ann Margaret Thompson
 Jerald Thompson *
 Sharon Thompson
 Mary Ann Travnik
 Dr. Janet Tucker
 Richard Unger Ph.D.
 Jorge Uribe

Irwin Uteritz Jr. *
 Betsy Nimitz Van Dorn
 I. Van Kleeck
 N. Van Kleeck
 Marcia Vincent
 Harriet Vitale
 Susan Vitek
 Barbra Vogen
 Professor Valerie Vollmar
 Jeff Volmerding
 Jo Ann Wallace ∞
 Robert Walton
 Judith Wank
 Barbara Warner
 C. Warrock
 Elinore Washburn
 Pat Waterman
 Thomas Wayne
 Terry Webb
 Vicky Webb
 John Weichsel
 Arlene Weintraub
 Rabbi Richard Weiss
 Joan Weissberg
 Nancy Wessel
 Joan West-Hirsch
 Robert Westerdale
 Ellen Westheimer
 Jonathan Wexler
 Matthew Whitaker
 Sydney Whitaker
 Daphne Whitman
 Richard Whittaker
 Benjamin Williams
 Dr. Van Williams Jr.
 Holly Williams
 Thomas Williams
 Constance Willoughby
 Janice Wilson
 Patricia Wilson
 Robert Wistort *
 Carol Witt *
 Dr. Michael Wolf ∞
 Beatrice Wolfe
 Paul Wolfson
 Sandra Wonders *
 Ho Wong
 John Woods *
 Harrell Woolf
 Jane Work *
 Peter Wright
 Deanna Yateman
 Barbara Young
 Debra Young
 Margarita Young
 Samuel Young
 Gloria O'Quinn Zachari
 Linda Zanot
 Michelle Zboralski
 Joyce Zimmerman
 Madelon Zimmer

Celebrating our legacy donors who support our future with a planned gift. Scan the QR code to view the complete list.



Stewarding your resources efficiently and effectively

Compassion & Choices is proud to be rated one of the most trusted, efficient, sustainable, accountable and transparent charities in the country.



VOLUNTEER LEADERSHIP

Compassion & Choices Board of Directors

Jerri Shaw, MRP - *Chair*
 Chandana Banerjee, MD, MPA, HDMC - *First Vice Chair*
 Nancy Hoyt, MA - *Second Vice Chair*
 Elaine Charney, JD - *Secretary*
 Dan Grossman, MBA - *Treasurer*
 David Cook, MTh, JD
 Debbi Gibbs, M Arch
 Jill Gordon, MBA

Steve Hut, JD
 Csaba Méra, MD, FAAP, FRCPSC
 Lucille Ridgill, MD
 Leslie Rowley, PhD, MBA
 Samantha Sandler, MSW
 Rev. Madison T. Shockley II
 Mark Weideman, JD
 Kim Callinan, MPP, MBA, PMP - *President/Chief Executive Officer, ex officio*

Compassion & Choices Action Network Board of Directors

Betsy Van Dorn, MEd - *Chair*
 David Cook, MTh, JD - *Secretary*
 Karen Pye, MPH - *Treasurer*
 Debbi Gibbs, M Arch
 Vincent Wiraatmadja
 Irene Wurtzel
 Kim Callinan, MPP, MBA, PMP - *President/Chief Executive Officer, ex officio*

African American Leadership Council

Khadine Bennett
 Jason Gaulden
 Christy Davis Jackson
 Channté Keith
 Joél Simone Maldonado
 Rev. Charles W. McNeill Jr.
 Ottamissiah "Missy" Moore
 Beverly Morgan
 Shawn Perry
 Dr. Lucille Ridgill
 Avery Leora Ross
 Rev. Madison T. Shockley II
 Shirley Tabb
 Al Thomas
 Ricardo D. Thomas

Latino Leadership Council

Father Luis Barrios
 Pastor Sergio Camacho
 Rev. Dr. Ignacio Castuera
 Nilsa Centeno
 Guillermo Chacon
 Rebecca Chavez-Houck
 Dr. Yanira Cruz
 Dan Diaz
 Dolores Huerta
 Jorge Lambrinos
 Maria Lemus
 Irisaida "Isa" Mendez
 Mauricio Ochmann
 Hanna Olivas
 Maria Otero
 Dr. Jaime R. Torres
 Dr. Daniel Turner-Lloveras

Healthcare Advisory Council

Chandana Banerjee, MD, MPA
 Jillian Blueford, PhD
 Ven. Zhiyun Cai, PhD, BCC, PCHAC
 Lisa Deal, RN, MPH, ScDED
 Debra Dunn, MSN, MBA, RN
 Curt Eschels, MAC, MST
 Angela Forcucci, Pharm D
 Michael D. Fratkin, MD, FAAHPM
 Heather Frucci-Lupa, BCPA
 Al Giwa, MD, MBA
 Satheesh Gunaga, DO
 Nate Hinerman, PhD, MFT
 Jiewen (Janice) Huang, MSW, ASW, EdD
 Eunju Lee, LCSW, MA, MS
 Betty Lim, MD
 Csaba Mera, MD
 Karen Morin, RN
 Evan Pulvers, MD
 Amy Reese
 Sonja Richmond, MD
 Mitsuo Tomita, MD
 Yelena Zatulovsky

Asian American, Native Hawaiian and Pacific Islander Leadership Council

Semoon Chang
 Mahina Paishon-Duarte
 Ben de Guzman
 Dr. Sue Royappa
 Dr. Mitsuo Tomita
 Vincent Wiraatmadja

LGBTQ+ Leadership Council

Florrie Burke
 Stella Dawson
 Phil Duran
 Carrie Framsted
 Allyne Hammer
 Blake Oshiro
 Kelly Rice
 Barb Timper



Care and Choice at the End of Life

101 SW Madison Street, #8009

Portland, OR 97207

800 247 7421

CompassionAndChoices.org

Reach. Inform. Engage.

We delivered a comprehensive program of interactive webinars across a broad range of topics to our audience. Here are some of our most popular webinars, with an average of 1,000 registrations each:

- » The Song of Our Scars
- » Wooden Nickels National Event
- » Inspired to Share: Four Stories of Intentional Living at the End of Life
- » Catholics for Compassion: Living and Dying According to Conscience
- » Dignity, Death and Disabilities: A Discussion
- » Black History Month: End-of-Life Empowerment and the Faith Community
- » Don't Worry Be Ready: A Tour of Compassion & Choices' Finish Strong Dementia Tools
- » Everything You Wanted to Know About VSED, but Were Afraid to Ask

View these and many other webinars online: CandC.org/staying-stronger-together

Or sign up to join us for new webinars and events at: CandC.link/events