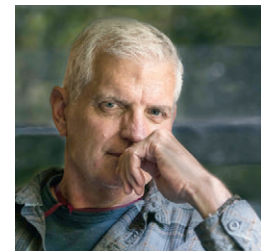


# 2019-2020 Annual Report

## STRONGER TOGETHER: Our Journey Forward



In 2007, Dr. Omega Silva convinced the first national professional medical association to adopt a supportive medical aid-in-dying policy. She was also instrumental in the passage and implementation of the Washington, D.C. Death with Dignity Act and an honorary member of our African American Leadership Council. We are glad she was able to access the option she fought so hard for.



**“I’m grateful that Compassion & Choices helped Omega overcome roadblocks in accessing and using the law, enabling her to die peacefully, without needless suffering, at home, in her own bed, with me by her side.”** – Harold Bryant Webb, widower of Dr. Omega Silva



**DR. OMEGA  
SILVA**

# MESSAGE FROM THE PRESIDENT AND CEO

When history is written, I have little doubt 2020 will be recorded as one of the most challenging years in American history.

Far too many people suffered lonely, isolated deaths due to COVID-19; others were concerned about how they could receive end-of-life care safely; and underserved communities were, and continue to be, disproportionately impacted by the devastation of this disease. As a result, our mission took on increased importance:

**Improve care, expand options and empower everyone to chart their end-of-life journey.**

While many wondered what changes would come as a result of the pandemic, Compassion & Choices took an active role in shaping that destiny.

We took action immediately and charted a new path forward — one that is already contributing to major advances in healthcare quality, delivery, options and accessibility at life's end.

I hope that as you peruse our annual report, you are as proud as I am. You were a major part of our progress in this challenging year. Your notes, emails, calls, volunteerism and financial support drove the movement forward despite relentless uncertainty. No doubt, in time, together, we will realize humanity and dignity at life's end.

With deep gratitude,



Kim Callinan



# RESPONDING TO THE PANDEMIC

## Planning for End-of-Life Care

The pandemic heightened concerns among our terminally ill supporters about their ability to navigate their illness and dying process, and increased uncertainty among all of us about how to plan for life's end. Compassion & Choices took action early in several ways:

- » Developed a free **comprehensive COVID-19 Toolkit** (English and Spanish) as part of our Finish Strong program that includes tailored resources to address the most pressing questions facing people with advanced and terminal illness, including a special COVID-19 addendum to your advance directive.
- » Launched our **Staying Stronger Together webinar series** in tandem with National Healthcare Decisions Day in April, which blossomed into 14 live national events attended by thousands of people, plus countless state virtual events addressing an array of topics, from end-of-life planning and virtual advocacy to medical aid-in-dying authorization and implementation.
- » Secured a **steady stream of media coverage** — through articles, press releases, ads and more — using the voices of our leadership and storytellers to clarify misconceptions and empower the public to access our menu of tools to navigate available options.



ISA  
MENDEZ

“

Since my cancer diagnosis, my mission is to raise awareness about the importance of end-of-life planning. Compassion & Choices planning resources and COVID-19 toolkit are free, easy to use and help people clarify priorities, resulting in real peace of mind.”

Isa Mendez, Compassion & Choices Latino Leadership Council member, has stage 4 uterine cancer; she promotes our Finish Strong resources.

## Transforming End-of-Life Care

COVID-19 also brought to the forefront the glaring inadequacies of the current healthcare delivery system and growing concerns about the ability of vulnerable patients to receive care safely — whether routine examinations, palliative or hospice care, or medical aid in dying. Compassion & Choices harnessed our expertise to help reinvent the way Americans receive end-of-life care through several actions:

- » Helped **secure critical provisions for seriously and terminally ill patients** in the massive Coronavirus Aid, Relief and Economic Security (CARES) Act, including improvements to telehealth laws to enable patients with a serious or terminal illness to access end-of-life care from the safety and comfort of their home.
- » Advocated for **improved telehealth laws** through federal and state-specific policies to ensure safe and equitable access to care for terminally ill patients without the health risks of in-person visits.
- » Urged **reinstatement of provisions of the Patient Self Determination Act**, which requires providers to inform patients about their advance directive policies, through a sign-on letter joined by 12 national organizations and 5,000 individuals.



**DR. JEFF  
GARDERE**

“

The expanded telehealth provisions that Compassion & Choices and others advocated for so passionately have been transformative in healthcare delivery, ensuring people, particularly underserved communities, can safely and more easily access quality healthcare.”

Dr. Jeff Gardere, psychologist, minister, author and advocate for underserved communities, testified in Maryland and New York.

# ENGAGING UNDERSERVED COMMUNITIES

Choice and options for care at the end of life should be universal. Compassion & Choices is working diligently to make sure all people — regardless of age, race, ethnicity, sexual orientation, gender identity or political affiliation — have the resources and tools they need to plan for and access an end-of-life experience that reflects their wishes and priorities.

A powerful surge of activism around racial justice and equality highlighted persistent healthcare and access disparities among underserved communities. As the country grappled with possible solutions to these inequities, Compassion & Choices accelerated our work to embody inclusive strategies while continuing to elevate our voice and commitment in the national discussion in several ways:

- » **Reached Black and Latino populations:** With the guidance of our African American and Latino Leadership Councils, we launched a public education campaign of culturally competent and actionable ads, digital tools, virtual discussions and videos with key community leaders, such as Dr. Jeff Gardere, Dr. Ben Chavis and Dolores Huerta.
- » **Formed collaborations and partnerships:** We built new organizational alliances, developed robust resolutions, worked with state leaders to advance on-the-ground efforts, established new partnerships and collaborations, and cultivated current relationships with some 38 leading organizations, including the National Organization of Black Elected Legislative Women, National African American Tobacco Prevention Network, the Dolores Huerta Foundation and the National Hispanic Medical Association.
- » **Launched a culturally competent public education campaign** targeting underserved communities that included digital tools, targeted ads and public service announcements, impassioned letters to more than 74,000 people, and the dissemination of more than 14,000 advance-care planning resources.



**DR.  
BENJAMIN  
CHAVIS**

“

Talking about and planning your transition will not kill you, but it will save your loved ones the awful sorrow and agony of unpreparedness. We are grateful to Compassion & Choices for helping us transfer our reluctance and fear of discussing the ultimate transition of our life journeys into a responsible and respectful plan of love and dignity.”

Benjamin Chavis, Ph.D., civil rights leader and president and CEO of the National Newspaper Publishers Association (NPPA).

# PLANNING FOR DEMENTIA

The needs of people with dementia at the end of life are urgent, unique and require careful consideration. In the winter of 2019, Compassion & Choices launched a national campaign to address how a person at risk of, worried about or in the early stages of dementia can plan for a dignified, natural, unimpeded death.

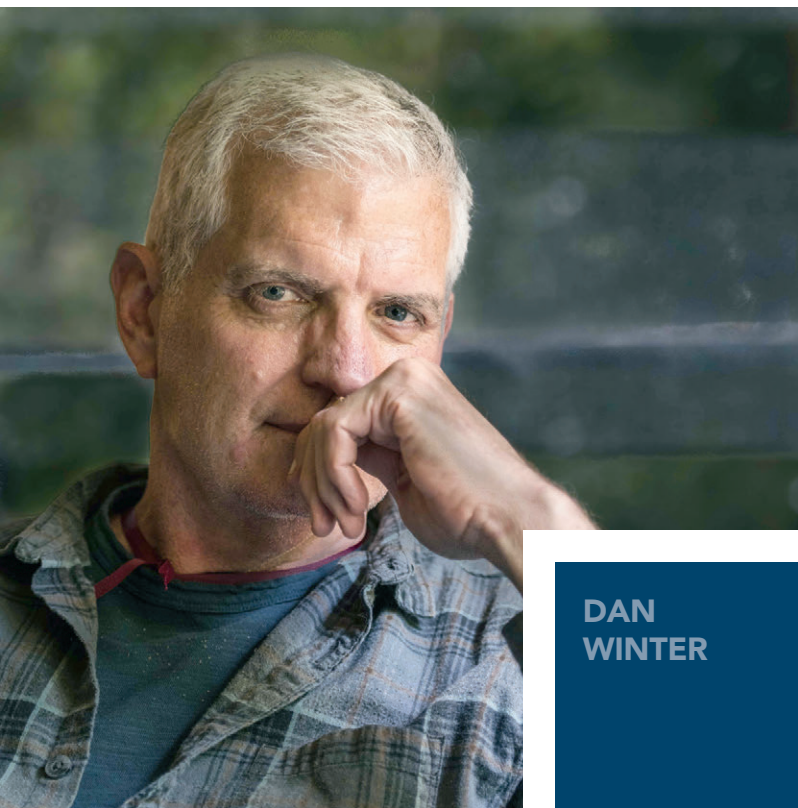
Starting in Oregon and moving to Florida and beyond, we engaged Compassion & Choices storytellers and other volunteer advocates to travel the states to spark dialogue and systemic change by encouraging doctors (including their own), care communities and hospices to adopt our end-of-life dementia directive.

The program's core elements include:

- » The **Dementia Values & Priorities Tool**, which allows people to create a set of clear-cut care instructions for their loved ones and outline their intentions through a personalized care plan — a Dementia Healthcare Directive.
- » The **Dementia Decoder** empowers people to specify what they want to accomplish from an upcoming clinical appointment and customize that experience using a list of helpful questions.
- » A **web portal** that provides comprehensive planning and care resources to assist people with dementia, their loved ones and caregivers on this difficult journey.
- » A **series of webinars** to educate people about planning for a dementia diagnosis and encourage discussions about the culture shift necessary to allow people with dementia to die dignified and natural deaths in increasing numbers — starting with a webinar hosted by the American Society on Aging and with UsAgainstAlzheimer's.

This is the first national campaign designed to help a person work within medicine to choose a dignified, natural, unimpeded death in advance of a dementia diagnosis.





DAN  
WINTER

“

The new Compassion & Choices Dementia Values & Priorities Tool already helps me face practical questions like that. With the new tools from Compassion & Choices, I am developing the emotional skills to address my end-of-life options. There is nothing else out there like this. To me, it's a godsend. I now have choices that I didn't know I had.”

Dan Winter serves on the American Civil Liberties Union board and was recently diagnosed with Alzheimer's disease.

# ADVANCING END-OF-LIFE AUTONOMY: COAST TO COAST

In every state in the nation, Compassion & Choices is mobilizing volunteer leaders and supporters to advance end-of-life autonomy by authorizing medical aid in dying; establishing our legal rights to forgo treatments in advance of a dementia diagnosis; and reducing disparities in end-of-life care.

This fiscal year, we amassed significant achievements:

- » Launched efforts to ensure access to New Jersey's newly authorized Medical Aid in Dying for the Terminally Ill Act, which took effect August 1, 2019.
- » Introduced legislation to authorize medical aid in dying in 20 states, advancing further than ever in Massachusetts.
- » Advanced efforts to improve existing model medical aid-in-dying legislation, including leading efforts to improve Hawaii's Our Care, Our Choice Act and supporting efforts to improve Washington's law.
- » Launched our newly established dementia program.
- » Launched a public education campaign to engage underserved communities in end-of-life planning, featuring opinion articles, public service announcements, video assets and new national influencers representing communities of color.



REP. PAUL  
BAUMBACH

“

One of the reasons we've made progress is because of our partnership with Compassion & Choices. They are our team on this. They organize education events, lobby days and letter-writing campaigns. We would be nowhere in Delaware without them. I am one of their biggest advocates, and I know that they keep my commitment going.”

Rep. Paul Baumbach (Delaware) is a sponsor of the Ron Silverio/Heather Block End of Life Options Law.

## Compassion & Choices' Reach

**22 states** where we built capacity to advance end-of-life options, including medical aid-in-dying legislation

**108 legislators** in 24 states were provided technical assistance

**342 lawmakers** were identified to serve as sponsors or cosponsors of legislation that authorized medical aid in dying

**4,533 end-of-life consultation sessions**


**2,155 legislative visits**

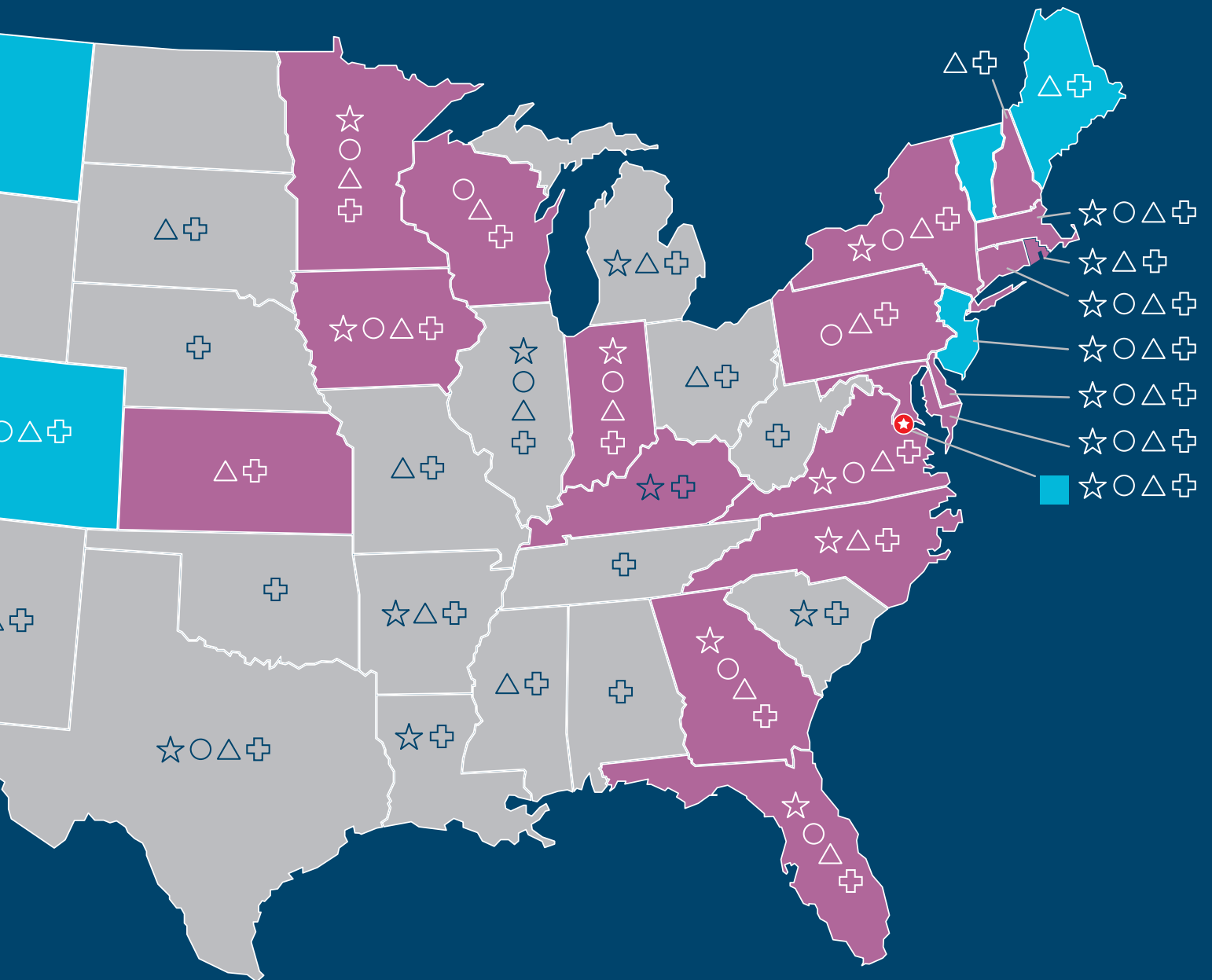
**3 states** where we advanced legislation to improve existing medical aid-in-dying laws

**13 large medical conferences** attended, including speaking roles at City of Hope's first end-of-life symposium

**over 50 healthcare systems and organizations** were provided technical support



	Authorized medical aid in dying		Compassion & Choices storytellers
	Medical aid-in-dying legislation introduced during 2019/2020 legislative session		Individuals accessed our Spanish-Language tools
	Compassion & Choices volunteer groups		Individuals called our end-of-life care consultants



**Across the nation, we advanced medical aid-in-dying legislation, launched our new dementia program and worked to ensure more patients can access the care they want — nothing more, nothing less.**

## California

Compassion & Choices achieved a major milestone in our defense of the California End of Life Option Act when the Riverside County Superior Court ruled in *Ahn v. Hestrin* that the law was passed constitutionally and opponents do not have standing to bring their claims. The court's decision has been appealed and the litigation is ongoing. Kim Callinan, Rev. Madison Shockley, Dan Diaz and multiple storytellers attended Assemblymember Susan Talamantes Eggman's 2nd Select Hearing on the California End of Life Option Act, stressing that the law is working for those who can access it, but too many barriers are still in place.

## Delaware

Compassion & Choices inundated lawmakers with weekly emails addressing key components of the Ron Silverio/Heather Block End of Life Options Law and dispelling myths. Our state-wide survey found 72% of Delawareans across all demographics support medical aid-in-dying legislation.

## Florida

Compassion & Choices launched our dementia pilot program, reaching over 4,000 Floridians through educational events (including a speaking tour with Dan Diaz, a *Finish Strong* book tour and end-of-life planning workshops).

## Hawai'i

Compassion & Choices launched a campaign to improve the Our Care, Our Choice Act, securing lead sponsors for identical bills in the House and Senate. We kicked off our campaign with a panel at the State Capitol to discuss needed improvements and successfully passed the bill out of the Senate.

## Illinois

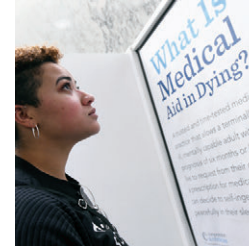
Working in partnership with the ACLU of Illinois and Final Options Illinois, we expanded to 9 action teams, hosted 35 community events, and trained volunteers on phone banking to engage supporters across the state.

## Maryland

Compassion & Choices organized a lobby day in support of the Maryland End-of-Life Option Act with over 185 supporters, 15 legislative sponsors and cosponsors, and a legislative hearing in front of the Senate Judicial Affairs Committee, where dozens of advocates testified in support of legislation.

## Massachusetts

Through public education and lobbying, Compassion & Choices and others secured the sponsorship of more than 67 Massachusetts lawmakers for the End of Life Options Act, positioning it to successfully advance through the Joint Committee on Public Health for the first time ever.



## Minnesota

Compassion & Choices organized an informational hearing on the Minnesota End of Life Option Act with over 120 supporters, relegating opponents to an overflow room. Speakers included Barbara Coombs Lee, Dr. David Plimpton, Reverend Harlan Limpert, and storytellers Marianne Turnbull and Bobbi Jacobsen.

## New Jersey

Compassion & Choices created steady media coverage and grassroots support to protect the new medical aid-in-dying law from both legislative and legal attempts to overturn it. At the same time, we launched robust implementation activities, including medical education efforts that contributed to 42 medical centers, hospitals and hospices adopting supportive medical aid-in-dying policies.

## New York

Compassion & Choice launched an aggressive multi-prong campaign targeting New York lawmakers that included: 1) a billboard on the New York State Thruway into Albany announcing "56% of doctors and 63% of voters agree: Pass Medical Aid in Dying NOW!"; 2) a large-scale exhibit in the legislative office building that launched our "50 Reasons" campaign (see page 14); 3) strategic earned and social media campaigns listing a new reason to pass medical aid in dying every day; 4) an event to announce the support of

our first major disability rights group; and 5) a partnership with Dr. Jeff Gardere, better known as "Dr. Jeff" or "America's Psychologist."

## Oregon

Compassion & Choices unveiled our dementia program at our annual Oregon event, where Dan Winter shared his compelling story about using the dementia tools (see page 7) with more than 200 supporters.

## Washington, D.C.

Compassion & Choices created a working group with DC Health, the District's Department of Health, to address administrative barriers to patient access, resulting in a partnership to provide annual training to medical providers. During this fiscal year, 185 medical providers attended and received continuing medical education credits as a result of our work.

**Don't see your state listed?**  
Visit [CompassionAndChoices.org](https://CompassionAndChoices.org)  
to learn what is happening in  
your state.

# THE SPECIAL POWER OF STORYTELLERS

Throughout the country, Compassion & Choices identified people personally touched and impacted by end-of-life issues, who bring a human face to our advocacy and establish powerful connections with lawmakers. In New York, for example, storytellers were featured in our “50 Reasons to Support New York’s Medical Aid in Dying Act” campaign, releasing one reason per day to lawmakers and the media to amplify personal stories and pleas from residents across the state. Some powerful reasons are shown here.



**Florrie Burke**

*“So that after more than 30 years of a vibrant life together, no one has to remember the final moments of a life well lived as ones spent in agony.”*



**Fay Hoh Yin**

*“Because giving me the option of medical aid in dying would free me to spend all my remaining energy just living, knowing that I would not end up in a dark hole of suffering.”*



**Anthony Randolph**

*“So that no one has to watch their strong former Marine brother wither away in a hospital bed and suffer needlessly at the end of life.”*



**Gene Hughes**

*“So that at the end of my life, I have the autonomy that I fought so hard for since my first day in a wheelchair.”*



**Susan Rahn**

*“So that no one is forced to be at someone else’s mercy for pain management and comfort care at the end of life after enduring countless treatments, procedures and side effects in order to live as long as possible.”*



## VOLUNTEER LEADERSHIP

### Board of Directors

David N. Cook, M.Th., J.D.

**Chair**

Rev. Madison T. Shockley II

**First Vice Chair**

Nancy Hoyt, M.A.

**Second Vice Chair**

Steve Hut, J.D.

**Secretary**

Dan Grossman, M.B.A.

**Treasurer**

Debbi Gibbs, M. Arch.

Lucille Ridgill, M.D.

Leslie Rowley, Ph.D., M.B.A.

Samantha Sandler, M.S.W.

Jerri Shaw, M.R.P.

Mark Weideman, J.D.

### Ex Officio

Kim Callinan, M.P.P.

**President and Chief Executive Officer**

### African American Leadership Council

Khadine Bennett

Christy Davis Jackson

Jason Gaulden

Channte' Keith

Rev. Charles McNeill Jr.

Ottamissiah "Missy" Moore

Beverly Morgan

Shawn Perry

Dr. Lucille Ridgill

Rev. Madison T. Shockley II

Dr. Omega Silva (1919-2020)

Rev. Dr. Paul Smith

Shirley Tabb

Al Thomas

Ricardo Thomas

### Latino Leadership Council

Fr. Luis Barrios

Pastor Sergio Camacho

Rev. Dr. Ignacio Castuera

Nilsa Centeno

Guillermo Chacon

Former Rep. Rebecca Chavez-Houck

Dr. Yanira Cruz

Dan Diaz

Dolores Huerta

Jorge Lambrinos

Maria Lemus

Irisaida "Isa" Mendez Iriarte

Mauricio Ochmann

Hanna Olivas

Maria Otero

Dr. Jaime Torres

Dr. Daniel Turner-Lloveras

# COMBINED STATEMENT OF FINANCIAL POSITION

June 30, 2020

## Assets

### Current Assets

Cash and cash equivalents:	
Operating	1,030,279
Investments	4,729,839
Pledges receivable-current portion	348,640
Investments	13,897,148
Prepaid expenses and other	313,902
Beneficial interest in charitable remainder trusts	81,980
Other current assets	852
<b>Total current assets</b>	<b>20,402,640</b>

### Property, Equipment and Improvements, at Cost

Furniture, fixtures and equipment	356,540
Leasehold improvements	11,695
	<b>368,235</b>
<b>Less accumulated depreciation and amortization</b>	<b>356,076</b>
<b>Total property, equipment and improvements</b>	<b>12,159</b>

### Other Assets

Pledges receivable net of current portion	35,000
Intangible assets	9,514
Investment, partnership interest	238,841
Deposits	20,039
<b>Total other assets</b>	<b>303,394</b>

**TOTAL ASSETS** **20,718,193**

## Liabilities and Net Assets

### Current Liabilities

Accounts payable	339,611
Accrued expenses	783,316
<b>Total current liabilities</b>	<b>1,122,927</b>

### Long-Term Liabilities

Gift annuity payments due	392,403
<b>Total long-term liabilities</b>	<b>392,403</b>
<b>TOTAL LIABILITIES</b>	<b>1,515,330</b>

### Net Assets

Without donor restrictions:	
Operating	18,844,491
Net investment in property, equipment and improvements	12,159
With donor restrictions	346,213
<b>Total net assets</b>	<b>19,202,863</b>

**TOTAL LIABILITIES AND NET ASSETS** **20,718,193**

# COMBINED STATEMENT OF ACTIVITIES AND CHANGES IN NET ASSETS \*

For the Year Ended June 30, 2020

## Revenue and Other Support

Conferences and events	--
Contributions	18,768,894
Donated services	618,541
Membership fees	60,062
Investment income, net of expenses	369,903
Realized and unrealized gain on investments	(26,060)
Gain on sale of asset	2,050
Other income	49,113
<b>Total revenue and other support</b>	<b>19,842,503</b>

## Expenses

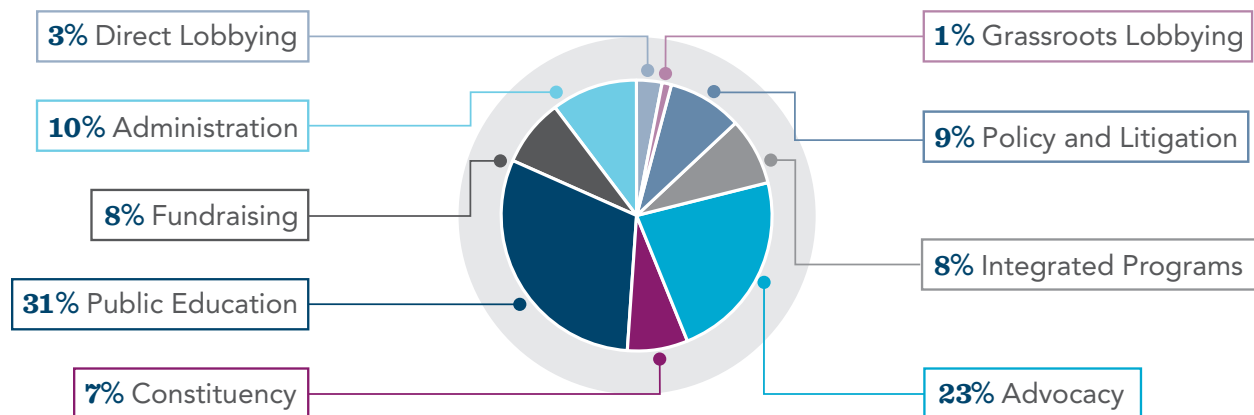
Programs	13,633,238
General and administrative	1,685,763
Fundraising	1,360,649
<b>Total expenses</b>	<b>16,679,650</b>
<b>Increase in net assets</b>	<b>3,162,853</b>

## Net Assets, Beginning

Total net assets, beginning	16,040,010
<b>NET ASSETS, ENDING</b>	<b>19,202,863</b>

## ALL COSTS \*

For the Year Ended June 30, 2020

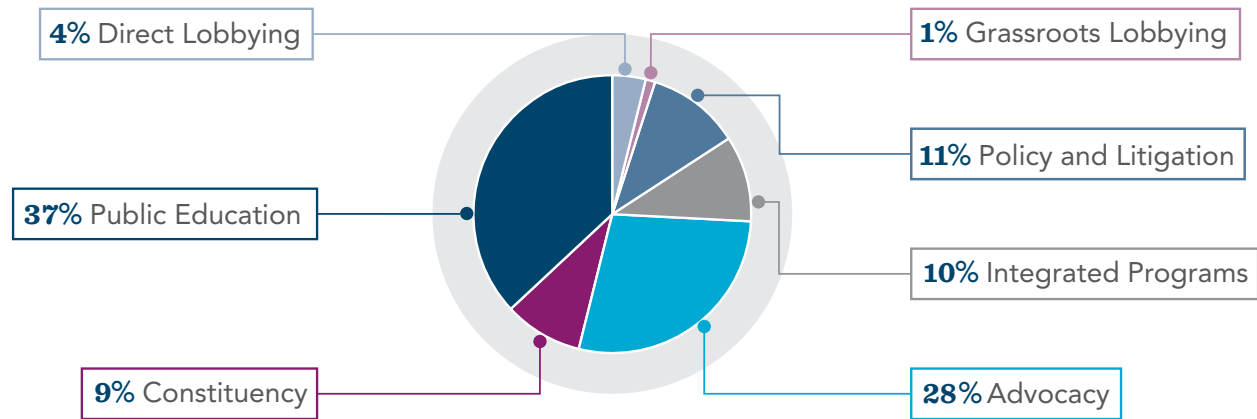


\* Compassion & Choices and Compassion & Choices Action Network

## PROGRAM EXPENSES AND RATIOS\*

For the Year Ended June 30, 2020

This pie chart and table offer a detailed look at how Compassion & Choices' expenses are distributed by program area.



	COMPASSION & CHOICES	COMPASSION & CHOICES ACTION NETWORK	TOTAL
Direct Lobbying	486,849	9,551	496,400
Grassroots Lobbying	186,979	–	186,979
Policy and Litigation	1,518,006	–	1,518,006
Integrated Programs	1,316,618	–	1,316,618
Advocacy	3,788,699	3,548	3,792,247
Constituency	1,213,850	–	1,213,850
Public Education	5,079,417	29,721	5,109,138
<b>TOTAL</b>	<b>13,590,418</b>	<b>42,820</b>	<b>13,633,238</b>

\* Compassion & Choices and Compassion & Choices Action Network

## CELEBRATING ALL WHO ADVANCE THE MOVEMENT

When our supporters come together, anything is possible. The collective impact of their power is illustrated with each gift made throughout the year, fueling every advancement we make and propelling us forward every day, all across the country.

With deepest gratitude, we give thanks to all the donors listed on the following pages — and the thousands more that we don't have space to acknowledge. We honor and celebrate friends who contribute gifts of any amount.

If you are a new donor, we welcome you to our community of incredible, dedicated supporters, many of whom are celebrating 5, 10, or even 20-plus years of commitment to the cause — providing the foundation that sustains all our work.

### How You Can Help

#### Donate

Online: [CompassionAndChoices.org/donate](https://CompassionAndChoices.org/donate)

Call: 800.247.7421 x2159

Mail your gift to:

Compassion & Choices

Attn: Trish Bernstein

101 SW Madison Street, #8009

Portland, OR 97207

We also accept stocks, bonds and mutual fund shares, as well as IRA-qualified charitable distributions.

#### Be a Champion

Setting up a recurring monthly gift is simple and easy. Your gift as a Champions Circle member will keep us moving forward month to month and year to year. Sign up at [CompassionAndChoices.org/champions-circle](https://CompassionAndChoices.org/champions-circle) or call 800.247.7421 x2159.

#### Legacy Gifts

Creating a planned gift can provide significant tax benefits and lifetime, tax-free income.

Contact us at 800.247.7421 x2152 or [plannedgiving@CompassionAndChoices.org](mailto:plannedgiving@CompassionAndChoices.org) to learn more and to let us know if you have a legacy gift in your estate plan to ensure the support of our work in the future.

#### Donor-Advised Funds

To donate through your fund, simply select Compassion & Choices from the list of non-profits or ask your provider to add us to the list. Our tax ID is 84-1328829. You can also make Compassion & Choices the successor/beneficiary of your donor-advised account.

#### Other Ways to Give

Ask friends to contribute in honor of your birthday or celebration; set up a Facebook fundraiser; or select Compassion & Choices as your AmazonSmile charity.

**We are deeply grateful to the following donors — and the tens of thousands of others not listed — whose generosity and commitment make our success possible.**

*(July 1, 2019–June 30, 2020)*

### **Circle of Transformation (\$1 million +)**

Anonymous  
Donald A. Pels Charitable Trust

### **Circle of Leadership (\$500,000 +)**

Carole Bradfield\*  
Robert Opsahl\*  
Anna Lou Wooldridge\*

### **Circle of Autonomy (\$250,000 +)**

Gary Conrad\*  
Fidelity Charitable Gift Fund  
Lynn Loacker  
Stupski Foundation

### **Circle of Compassion (\$100,000 +)**

The Anonymous Fund of M. C. F.  
Apple Pickers Foundation  
Leslie and Bill Biggs  
Ruth Charlton\*  
DonorsTrust  
Ruth Galaid\*  
Ken and Frayda Levy  
Edward Patricks  
Robert Ritterbusch\*  
Schwab Charitable Fund  
Mary Van Buren\*  
Vanguard Charitable Endowment  
Daphne Whitman

### **Circle of Choice (\$50,000 +)**

Anonymous  
Colcom Foundation  
Russell Cowles  
Kerstin Doell in memory of Shirley Doell  
Earth and Humanity Foundation  
Penny and Bill George, George Family Foundation  
Head Family Charitable Foundation  
Isobel Parke\*  
Raymond James Charitable Endowment Fund  
Bonnie Re\*  
Beverly and Howard Rossman  
Rossman Family Foundation  
RRF Foundation For Aging  
Jerri Lea Shaw and Raymond H. Johnson Jr.  
Robert Susser\*  
Evelyn Warren\*

### **Circle of Comfort (\$25,000 +)**

1848 Foundation  
Mary Allen\*  
American Online Giving Foundation, Inc.  
Anonymous (5)  
Richard A. Busemeyer Atheist Foundation  
Thomas Cameron  
The Y. C. Ho/Helen and Michael Chiang Foundation  
Lorraine and Gordon Dipaolo  
Fiduciary Trust  
Dan Grossman  
Phil Harvey and Harriet Lesser  
Bayard and Julie Henry  
Sam Lawrence  
Shawn Maxwell\*  
Virginia McArthur  
The Purple Lady Fund/Barbara J. Meislin  
Robert Raben  
Teresa Sipone\*  
Joyce Steier\*  
Rick Strachan  
Lucy and Daniel Stroock  
Thoracic Foundation  
The Vradenburg Foundation  
Irene and Alan Wurtzel  
Zickler Family Foundation

**SYMBOL  
KEY**

★ Deceased  
+ Champions Circle member  
(recurring monthly gift)

## Circle of Dignity (\$10,000 +)

Anonymous (9)

Susan W. Agger Family Fund  
of the Greater Washington  
Community Foundation

George Arnstein

Bank of America Charitable Gift Fund

Burt Bassler

Willa and Robert Bernhard

Ernestine Bradley

Joel Brown\*

Ms. Elaine Charney

Fay Clayton and Lowell Sachnoff

Don Collins and Sally Epstein

David Cook and Ann Thompson Cook

Page and Jay Cowles

David and Kitty Crosby,  
The Longview Foundation

Teri and Robert Crosby,  
The Longview Foundation

Charles Denny Jr.\*

Carolyn Deodene

Bruce Ducker and Mary McGrath

Constance Eagle

John Eder\*

Dianne Elkin\*

Amitai Etzioni

Facebook

Kathryn Frankel

Diane Froot and Joyce Froot

Debbi Gibbs

Paula Gliner\*

Jill and Brad Gordon

Jill and Brad Gordon Family Foundation

Karen and Werner Gundersheimer

Nor Hall and Roger Hale

Rhyena Halpern

Michael Hardwick\*

Fay Hartog-Levin

Whitney Hatch

Merrit and Joan Heminway

The Bonta and Helen Hiscoe  
Charitable Fund

Nancy and Bob Hoyt

Jewish Community Federation  
and Endowment Fund



Beverly Sutton of San Francisco,  
California, donor since 2011.

“I support Compassion & Choices through my Fidelity Donor-Advised Fund because doing so is easy, convenient and doesn’t add to my current expenses.”

Kaplen Brothers Fund

Paul Klaassen

David L. Klein Jr. Foundation

Vicky Kleinman

Mary and Michael Koerner

Richard and Carole Leibner

Leibner Cooper Family Foundation

Alice Lesney

Harold and Renee Levine

Linda Lutes

Joseph MacDonald

Nivin MacMillan

Patricia Nelson Matkowski

Stephen May and Edward Casson

Lanny McGrew

Juliette J. Meeus

Irene Minkoff

Louise Moos

Joan and Bruce Mork

Chris and Jack Morrison

Sandra Jo Moss

Gloria Nagy and Richard Saul Wurman

Ray Netherwood

Network For Good

Marianne Newman

Susan Bay Nimoy

The Northern Trust Company

Roger and Joyce Nussbaum

Janet L. Olt

Linda Ostreicher

Margaret Parker

Patricia Phifer

Gigie and Laurence A. Price

Deborah Raboy

Joe Randles\*

Renaissance Charitable Foundation, Inc.

Ritta Rosenberg

Sandra Rowley

Dr. Peter F. Salomon and  
Mrs. Patricia Morgan

Robert and Lynne Schwartz

Nancy Schwarzwalder

Clinton H. and Wilma T. Shattuck  
Charitable Trust

Diana and Philip Sickles

Vanitha Singh

Paul Smith\*

Margaret Starmer\*

Ralph Stephens

Mary Stickford

Claude and Tina Thau

The Thompson Family Foundation, Inc.

Betsy Nimitz Van Dorn

Barbra Vogen

Cecille Wasserman

Arlene Weintraub

Ellen Westheimer

Priscilla Bernard Wieden  
and Dan Wieden

Susan Wohl

Dr. Michael C. Wolf

Peter and Barbara Wright

## Circle of Care (\$5,000+)

Ann B. Anderson  
 Anonymous (14)  
 Nancy Arseneault  
 Bernadette Augustinack  
 Kathleen Bandhu  
 Bar-Levav Family Foundation  
 Susan Barry  
 James Betts  
 Dr. Arthur Breipohl and  
 Mrs. Shirley Breipohl  
 Ms. Elizabeth H. Bromley and  
 Mr. Dougin Walker  
 Robert Brush  
 Allan and Lou Burdick  
 Joan Caly  
 Earl M and Margery C Chapman  
 Foundation  
 Stephen Charles  
 Bill Charlton  
 Bonnie and Louis Cohen  
 Daniel P. Collins  
 Jane Cowles  
 Joanne and Terry Dale  
 John Dalsimer and  
 Diane Kimmel Dalsimer  
 Joan Dayton  
 Karen Dean  
 The Deane Family Fund  
 Daniel Dolk  
 Nancy Douttiel  
 Bill Falik and Diana Cohen  
 Audrey and James Foster  
 David and Sharon Froba  
 Sally Froelich  
 Phyllis Girvetz  
 Alfred Glassell and Marli Andrade  
 David and Kathy Haaland  
 Robin Hanes  
 Lee Hansen  
 The Harmon Family Foundation  
 Eric Hemel  
 Joyce Day Homan  
 Stephen and Margaret Hut  
 Daryl Holtz Isenberg, Ph.D.

Cynthia Jennings and Brian Corrigan  
 John Kayser  
 Roger and Cathy Kligler  
 Marlise C. Konort  
 Wendy and Doug Kreeger  
 Sandy S. Larson  
 Merloyd Lawrence and John Myers  
 Judith Liersch and Allen Jennings  
 Maryel Locke  
 Sherry Lund  
 Mickey MacIntyre  
 Jacomien Mars  
 John and Laurie McBride  
 Richard and Shirley McDonald  
 Mr. Edgar Mendelsohn\*  
 Julie Metcalf  
 Mr. Harvey M. Meyerhoff  
 The Harvey M. Meyerhoff Fund, Inc.  
 Stephen Modzelewski and Deborah Sze  
 William Moore  
 Mary Oba  
 Jean Owens  
 Joan Parker  
 Denise Peine  
 Margot Perot  
 Charles Pilgrim  
 Dr. John Roberts and Mrs. Anne Roberts  
 Emilie Wood Robinson  
 Arthur and Toni Rembe Rock  
 Leora and Mort Rosen

Samantha B. and Mark J. Sandler  
 Isabel Sawhill  
 Peter Schaffer  
 Ina Schnell  
 Robbie and Richard Shell  
 Sharon Simpson  
 Dr. Mark E. Sobel  
 The Kate Cashel Fund of the  
 Community Foundation for the  
 Greater Capital Region  
 Drs. Howard and Barbara Stowe  
 Drs. Edwin and Dorothy Sved  
 Charles and Darci Swindells  
 Fred Turkovich and Deborah Swenson  
 George Warburg  
 Mark Weideman  
 Ralph Weindling  
 Stephen Weinroth  
 Weissman Family Foundation  
 John and Rebecca Wetzel  
 Dr. George B. Whatley\*  
 Whittier Trust Company  
 The Maria and Nigel Wilson  
 Charitable Fund  
 The Hon. Timothy E. Wirth  
 and Mrs. Wirth



Rev. Dr. Paul Smith of Silver Spring, Maryland, activist, volunteer and donor since 2001.

“In the 19 years that I’ve proudly supported Compassion & Choices, the progress has been incredible, each year outpacing the last.”



## Circle of Love (\$2,500+)

Peter and Rebecca Adams  
 Agger-Loewy Fund of Greater  
 Washington Community Foundation  
 Anonymous (9)  
 Prof. Ruth Ballweg  
 Judith Bero  
 Thomas D. Bond  
 Cecilia and Garrett Boone  
 Robert Brauer  
 Deborah Carmichael  
 Ron and Jane Cease  
 Anne Clark and Ed Parker  
 Anne Cooke  
 Arlene Cravens  
 Ellie Crosby, The Longview Foundation  
 Dr. Edward E. De Martini, Trustee  
 Daniel Deutsch  
 Patricia DeYoung  
 Mary Dolan, The Longview Foundation  
 Gail Dow  
 Loretta S. Downs<sup>+</sup>  
 Mark Drake  
 Dr. Barbara Engler  
 Donna Layton Evans  
 Bill and Kathy Farley  
 Ginger Farley and Bob Shapiro  
 Elizabeth Fischbach  
 Valerie Friedman  
 Dr. Jon Geller  
 Ramon E. Gilsanz  
 Samuel Goldberg  
 John Grayson<sup>\*</sup>  
 Linda Greenhouse  
 Julia A. Gregory  
 William and Barbara Guensche  
 The Bill Handsaker Fund  
 Ellen Harrison  
 Renee R. Holzman  
 Helen Horn<sup>\*</sup>  
 Dolf Hubschman  
 Hawksglen Foundation  
 Scott A. Hunter  
 Dr. and Mrs. Jeffrey Ilfeld

The JEC Foundation  
 Emily G. Kahn  
 Susan Kennedy  
 Barrie Lynn Krich<sup>\*</sup>  
 Mary Jane and Rick Kroon  
 Tina Lear and Elena Terrone  
 The Lederle Family Charitable Fund  
 Stephen Lee and Barbara Coombs Lee  
 Judith Letendre  
 Leonard M. Lipman Charitable Fund  
 of the Jewish Community Foundation  
 of Los Angeles  
 Adlyn and Ted Loewenthal  
 Lynne Malina  
 Margot Mazeau  
 Kathleen McCarthy  
 Jerome Medalie, Esq. and  
 Ms. Beth Lowd  
 Dr. Charles Miller and  
 Ms. Stephanie Marshall  
 Pam Woodley and Perry Mitchell  
 Modestus Bauer Foundation  
 Josefina and Ricardo Moran<sup>+</sup>  
 Mary Morgan  
 Rev. Frank H. Moss III and  
 Mrs. Betsy Moss  
 Laura and Jim Murray  
 Dr. Pamela Nelson  
 New World Foundation  
 Jeannie and Bruce Nordstrom  
 The P. W. S. Giving Fund  
 Lois Packer  
 Michelle G. Parrish  
 JaMel and Thomas Perkins  
 Jeanne Phillips and Walter Harris  
 Gail Piltz  
 Marilyn Pomeroy  
 Joan G. Poole  
 David S. Pratt, M.D., M.P.H.  
 Karen and David Pye  
 Russell Robb  
 Peter and Tish Robinson  
 Mr. and Mrs. William M. and  
 Sandra B. Rosen  
 Lynne Rosenthal  
 Skip and Marilyn Roskam

Anne Markham Schulz  
 Dorothy Davis Smith  
 Edwin and Margaret Smith  
 Kathleen Snider  
 Donald Spanninga  
 Jill and Richard Spitz  
 Margaret Stevens  
 Rachel and Donald Strauber  
 Marcia Strean  
 David Sturgeon  
 The T. Rowe Price Program for  
 Charitable Giving  
 Harold Thurm  
 Dr. Jonathan Tobert  
 Dr. Barbara Toeppen-Sprigg  
 The Triskeles Foundation  
 Dr. Molly Walsh  
 Dr. Scott Michael Wasserman and  
 Mrs. Samantha Wasserman  
 Waveland Press Inc.  
 Diane and Robert Wege<sup>+</sup>  
 James Feldman and Natalie Wexler

## Circle of Hope (\$1,000 +)

Dr. Helen Abadzi and  
Theodore Vakrinos, Esq.  
Betty and Jerome Abeles  
Stuart and Benjamin Abelson  
Foundation Trust  
Barbara Bender Abramson  
Marc F. Abramson, M.D.  
Bruce and Susan Ackerman  
Jeremy Green and Yvonne Adams  
Richard Adelaar  
Kathryn Newsome Ahlport  
Patricia Allard  
Barbara N. Allison  
Sophie Alweis and Lance Grebner  
Bill and Loring Amass  
Rickard Amundsen  
Woodbury and Cynthia Andrews  
Julie Andrus  
David Annis  
Anonymous (46)  
Hilda Aronson  
Mary Auth  
AYCO Charitable Foundation  
Nancy Ayres  
William Baker Jr.  
Jean and Ned Bandler  
William Barton  
Margaret Battin  
Virginia and Rob Bayless  
David Becker and Leslie Seeman  
Dorothy and G. N. Beckwith  
Mr. and Mrs. Samuel Beeler  
Dennis Belgard  
Mr. Ian Bell  
Phoebe Bender  
Ann Bennett  
Sue Bennett  
Sandra Berger  
Phyllis Bergman  
Trish and Jeff Bernstein  
Eleanor and Richard Berry  
Janet and David Berry  
David Biegelsen  
Jim and Lucinda Bisdroff



Harriet Vitale of Audobon, Pennsylvania, annual donor and planned giving donor since 1996.

“For over 20 years, I have supported C&C annually, and I have also included them in my estate plan to ensure their critical work continues for the future.”

Eleanor Blake  
James and Jane Ann Bobbitt  
Gail Boggs  
Emily Bond\*  
Minyon Bond+  
Linda Borders and Vaughn Hasslein  
Susan Boren and Steve King  
Ariel Borten  
Dr. William Bouma  
Phyllis Braddock  
Judith Brandt  
Alan Braverman  
Ralph Bristol  
Elizabeth Brody  
Edward Broesamle and Suzi Manara  
Martha Risberg Brosio  
Frances Burch  
Cheryl Burke and Alan Weiss  
Kathy Butler  
Julia Butters  
Helen Buttrick  
Dr. Karen L. Buxbaum and Dr. Ron Kwok  
Robert and Joyce Byers  
James Call and Kris Conquergood  
Connie and Jack Callinan  
Janis Calton  
Sara Cannon  
David Capes  
Judith Carroll  
Stacey B. Case

Shelley and Rich Casey+  
Sandra Cath  
Jane Catterton  
Prof. Kathy Cerminara+  
Katharine and James Chace  
Joseph Chaiklin\*  
Merle Chambers  
Robert Chambers  
William Chambers  
Dr. Mim Chapman  
Robert Cheek  
Kathleen Cheevers  
David and Claudia Chittenden  
Pilgrim United Church  
Jean Clark  
Alan and Anne Clarke+  
Frances Close  
Robert Coffland and Ellen Moore  
Carole Cohen\*  
Ethelyn Cohen  
Dr. Richard Cohn and  
Mrs. Susan Cooper  
Laurie Cohn  
Dr. Jeanne Cole  
Megan Cole  
Betty Collier  
Kitty Collins  
Ronald Collins  
Betty Comora  
Margaret Conacher

Janet Conn and Michael Debelak	Penny Engel <sup>+</sup>	Stephanie Garber and David Collins
Hope and Edward Connors	Joan and Edwin Engelhaupt <sup>+</sup>	Douglass Garibaldi
The Joan Ganz Cooney Fund	Diana Erbsen Esq.	Kenneth Gaskins
Susan Cooper	Lyn Erickson	Judith Gass
Rev. Norman Cram Jr.	Dr. Mary Erlanger	Peter Gates
Dr. Rob Crane	Bernard Estafen	GE Foundation
Dr. Richard Crowder	Fran and James Falender	Cindy and Robert Gelber
Diane Cummings	Sharon Felder	Jess Gersky
Stan Curtis and Ann Childers	Dr. Richard Feldman and Mrs. Roberta Feldman	Irene Gibson
Monika Daley	Robert and Susie Feldman	Irma Giordano
Veronica Daly	Alan Ferber	Joel Glass
Dr. Richard Davey and Ms. Nancy Lee Hubbard	Lawrence Ferderber	Elizabeth Glennon
John Davis	Peter Fernald and Susan Konar	Lance Goldberg
Ronald Davis	Carol Fey	Elizabeth Goldwasser
Shirley Ross Davis and family	Findley Family Charitable Fund	Barbara and David Goodman
Dr. Michael Day and Mrs. Marilyn Day	Linda Fish	Jack Goodman
Douglas and Wendy Dayton Foundation	Sharon and Richard Fish	Jonathan Goodson
Linda and Scott Deacon	Harvey and Susan Fishman	Neal Green
Diana Denoyer	Mike and Sally Fitzhugh	Greenwald Family Charity Account
Jeanne Desforges	Ellen Flaherty	John and Wanda Gregory <sup>*</sup>
Hon. Mr. John Despres and Mrs. Gina Despres	Lauren Flato	Dustin and Gale Griffin
Susan deVall	Yolanda Fletcher	George Griffin
The Jean E. Dilley E.S.T.	Mary Jane Fogle	Frank Grobman
Ruth Dinowitz	Victoria Ford	Dr. Martha Gross
Steve and Judy Dobson	Sarajane Foster	Guardian Life Insurance Company of America
Amy Donenfeld	Sara and Russell Foszcz	Pamela Gurnari
Duane Dossinger	Claudia Foulke	Patrick and Lynn Gurrentz
Double E Foundation	Foundation for Human Conservation	Kenneth Guza and Diana Larsen-Mills
Frances Downing	Ronald Fraboni	Jon Hagler
John E. Downing Charitable Fund	Steven Fraider	Susanna Hall
Christine Dreyfus	Kathleen Frankle and John Stodola	Bobbie Hallig <sup>+</sup>
Jill Duggan	Marc Franklin	Anne Hammond
Linda E. Durham	Susan Frawley	Sheila and Michael Hannah
Carol Duvall	Bruce and Kate Frederick	Janet Harden
Mr. Gerald Dworkin	Andrea Alfano and Charles Freiberg	Kristi and Robert Hardin Jr.
Dona Early	Dr. Richard Friedberg	Ann Harriman
JoAnne and Shelley Earp	Dr. Judith Friedman, Ed.D.	Claudine Harris
Andy and Kate Ebbott	Kay Friend	Leo Harris
James Eberhardt	Kristine Fulmer	Nan and Bill Harris
Stanley Eisenberg	Marianne Gabel	Lee Hausman
Karla Ekdahl and Peter Hutchinson	Haines and Nancy Gaffner	Aubrey Hawk
Robert Ekman	A. H. Gage Private Foundation	Liz and Van Hawn
Sylvia Emerick	Frederica Gamble	Janet Hendricks
Joan Emery	Gabriele Ganswindt	Donald Henley
	Rebecca Gaples	Richard Hermsen

Diane M. Herrmann	Bonnie Kramer and Kathy Shamey	Frances McKenzie
Elizabeth Hestnes	Margaret Kruse and Richard Cloutier	Judith McKenzie
Thomas Hestwood and Therese Jezioro	Robert Kuehlthau	Robert Meade
Mavis Hetherington	The L. S. L. Fund	Robert and Mary Medina
Diana Hitt Potter	Leanne Lachman	Peter Mele
Pauline Ho Bynum	George Lambert	Paul Mendelsohn
Rebecca Hoblin	Lisa Watson Lambert	Dr. Craig Messersmith and Mrs. Jane Messersmith
Gerry Hodes	Rebecca Lambert	Marcy Meyer
Jeannette Hofer	(w)here Real Estate	Molly Miceli <sup>+</sup>
Tamisie Honey	Diane Lane	Betsy Michel
John and Valerie Hopkins	Gayle Larson	Lennie Michelson
Anne Humes	Eric Lax and Karen Sulzberger	Marc and Marian Milgram
Dr. Larry Hungerford and Ms. Susan Hungerford	Edward V. Lee	Bette B. Miller
Dan and Irene Hunter	Timothy Lee	The Carol and Bruce Miller Donor-Advised Fund
Norma Irvin	Rodney Lehman	Kayleen Miller
Julanne Isaacson	Gayle Leventhal	Laurie Miller
Anita S. Isch	Mr. and Mrs. Robert Levetown	Tollie Miller
J. P. Morgan Charitable Giving Fund	Carol Levine	George Mills in memory of Crystal
Roy H. Jablonka	Diane Levine	Kathleen Mills
Rusty and John Jagers	Jacqueline and Edward Lewin	Brenda and George Milum
Joseph and Jeanne Jehl Jr.	Eleanor Roberts Lewis	Helen Mitchell
Christina Jennings	Dr. Julian Lifschiz	Lucy Mitchell, The Longview Foundation
Dr. Ava Jensen	Elizabeth and Sam Lightner	Dirk Mol and Jerald Wray
Mitzi Jensen	Renae Lillie	Anne B. Moore
Edward Jervey	Julie Lindholm	Dian Moore
Clare Johnson	Charles Little	Patricia and Arthur Moore
Dr. R. Keith Julian	Ilse Lohrer	Chuck and Melinda Moos
Stephen Kaloyanides Jr.	Sandra Long	Dr. George Morgan and Mrs. Hildegard Morgan
Barbara Kaneshige	John and Jane Loose	Paul F. Morgan
Barbara Karth	Joanne Lotreck	Maryanne Mott
Jonathan Kaufelt and Holly Corn	Dave and Carla Low	Ruth Moyerman
Judy Heymann Kazan and Steven Kazan	Rosamond Lownes	Dorey Munch
Elodie Keene	Susan Lowry	Christy and John Murchison
Patricia H. Kelso	David Lucas, M.D. and Peggy Lucas	Ms. Judy Murray
A. R. Kempes	Sarah and Kirk Ludwig	Jonathan Naiman
Roberta Kieffer	Gabrielle Lurie	Lisa and Michael Nash
Betsey Kilmartin	Leland Lynch and Terry Saario	Aryeh and Yvette Neier
Douglas and Elizabeth Kinney	Sandra Marsh	Cookie and Ken Neil
Patricia Klein <sup>+</sup>	William Marshall	Connie Neish
Willis Kleinenbroich	Prof. Brenda Martin Rapp	Carolyn Neketin
Lesley Knowles	Clark and Sari Maxfield	Matthew Nelson and Kip Beardsley
Marjorie Knowles	Catherine McCollum <sup>+</sup>	Blossom Nicinski
Ray and Dana Koch <sup>+</sup>	McConnell Family Fund	
Ralph Koldinger	Robert and Polly McCrea	
Kovler Family Foundation	Mr. Douglas McDonnell <sup>*</sup>	
	Dick and Joyce McFarland	

Robbie Nicol	James Prater	James Rupke
Dr. Arthur Nielsen and Mrs. Sheila Nielsen	Albert Preston*	The Jamie Russell Charitable Fund
Wilda Northrop	Rebecca Preston	Thomas D. and Judith F. Rutherford
Melissa and David Norton	Monique and Julian Proctor	Joy F. Sabl, Ph.D.
The Nunn Family Fund for the Future of Humanity	Jill Prosky and James Posner	Catherine Samuels
Cynthia Oehmichen	Dan and Helen Quinn	Karlla and Michael Sander
Martha Oetzel	Priscilla Quirk	Evelyn Sandground and Bill Perkins
The Oleskevich Charitable Fund	Melvin and Dolores Raff	Carol Santesson
The Rev. David Otto and Mary K. Otto	Suja Raju	Claire Sargent
David E. Owens	Dorothy Ramsey	Lily Sayre
Glenn and Margaret Palmer	Joan Ray	Lynn and L. G. Schafran
Prof. Gustav Papanek, Ph.D.	Gene Record+	Lawrence Schall
Jo Pappas	Margaret Phelan Reed	Nancy Schlegel
Michael Pargee	Dr. Monique Regard	Joseph and Barbara Schoenberg+
Carolyn Parker	Tom and Lana Reichert	Nancy Schulein
Lorraine Parmer	Betsey Reid	Sharon and William Schwarze
Kristina Patterson	The Thomas J. Reinhart Foundation	Dr. Mary Scott
PayPal Giving Fund	Roger and Hannelore Reiser	Mick and Alison Seaman
Marta Pazos	Stacey and Bernard Renger	Secular Humanist Fund
Fiona Pearce+	Lee Reynolds and Marie Coz	Mr. Eugene Segre
Jane and Richard Peattie	The R. H. & A. Q. Lawe Foundation	Randee Seiger
Roger Peck	Doug Rice and Barbara Rice	Niki Cox Shaffer in loving memory of her mother, Dr. Alice M. Cox
Ellen Peckham	Larry Richmond	Bev Shannon
Michelle Peel	Anders Richter	Carole Shannon
Pender Education Trust at the El Dorado Community Foundation	Gayle Riggs	Howard and Harriet Shapiro
Dr. Sarah Pender	Lynn Riggs	June Shapiro
Anne Pennington	Richard and Sheila Riggs	Bradlee Shattuck
Drs. Robert A. and Veronica Petersen	Gov. Barbara K. Roberts and Mr. C. Donald Nelson+	Merri Lea Shaw and Bruce Carroll
Judy and Darold Peterson	Robertson Family Fund of SEI Giving Fund	Shell Oil Company Foundation Matching Gifts
Mary and Stephen Perth	John Rodger	Sherwood Family Foundation of Naples
Dr. Robin Petty	The Sarah Rodgers Fund	Bruna and Stephen Shidler
Zelie and Carl A. Pforzheimer	Ellen and Kenneth Roman	James and Judy Shirley
Prof. John Pikulski	Barbara Ann Ronis	Rev. Madison T. Shockley II and Mrs. Gayle Shockley
Patricia and Thomas Pinkos	Jerry Rooke	Susanne Shutz
Kimberley Pittman-Schulz	Adam R. Rose	Suzanne Shynne
Louise Benz Plank	Edward and Nancy Rosenthal	Anne Silverman
Rodney Plimpton	Carl and Margaret Ross	Bonnie Ward Simon
Duane E. Polzien	Dee and Allan Roth	Sally Skartvedt
Mary Pope	Dr. Marc Rothstein	Paul Slater
Posner-Wallace Foundation	Leslie Jennings Rowley and Clancy Rowley	R. Evan Smith
Dr. Stephen Post and Mrs. Diane Post	Mearle and Allan Roy	Anne and Raymond Smith Jr.
Eleanor Pott	Donald Royer	Patricia Smitson Sehnert
Thomas Powell	Eric J. Ruby, M.D.	Martha and William Solano

Marsha Solmssen  
 Ms. Nancy B. Soulette  
 Sara Hamel and Wesley Sowers  
 Susan Spencer  
 Dr. Stephen Sperber and  
 Ms. Roberta Silverstein  
 Shirley and Stuart Speyer  
 Nesta and Walter Spink  
 Cyrus W. Spurlino  
 Mary Stein  
 Dr. Norman Steiner  
 Alan Steinert  
 Garry and Ardith Stensland  
 The Arthur and Edith Stern  
 Family Foundation  
 Edith Stern  
 Abbie Stevens  
 Dr. Karen Stewart  
 Robert and Molly Stine  
 Lanse Stover  
 Lynn Straus  
 Dr. Michael J. Strauss and  
 Dr. Molly Strauss  
 Elaine Stupp  
 Chacea and Donald Sundman  
 Ronald and Carmen Suter  
 Evelyn Sweasy  
 Roselyne Chroman Swig  
 Roger Swingle  
 Margaret Taliaferro  
 Dr. Ellen Tarlow  
 Jeff and Patsy Tarr  
 Evelyn M. and James C. Taylor  
 Philip and Sarah Taylor  
 Alexander Templeton  
 Joyce Thielen  
 The Thistle Giving Fund  
 Ann Thompson  
 Pasha and Laney Thornton  
 Virginia and Butch Thresh  
 TIAA Charitable  
 Roger Tiemann  
 Hon. Carolyn Titus  
 John Tornquist  
 Gail Triggs  
 Sarah Trimble

Dr. Janet Tucker, D.D.S. and  
 Dr. Dan Lammertse  
 Julie Tuggle  
 Gloria Turgeson  
 U.S. Charitable Gift Trust  
 Anne Urban  
 Karin Urban  
 Theodore Utchen  
 Sarah Vigoda  
 Marcia Vincent  
 Susan and Patrick Vitek  
 Joan Vivaldo  
 Johanna Von Mayr  
 Susan Wagner  
 Maureen Waldie  
 Lucy R. Waletzky, M.D.  
 The Walt Disney Company Foundation  
 Lissa Walter  
 Mr. Alan Ward  
 Sharran Warren  
 Linda C. Washburn  
 Patricia and Darwin Wassink  
 Joseph and Geraldine Waymire  
 Peggy Weber and Bob Whitlock  
 Hartley and Benson Webster  
 Frank and Denie Weil  
 Richard Weintraub  
 Mary Ruth Weisel, M.D.  
 Alan and Fani Weissman  
 Darla Wendel  
 Edward Westbrook  
 Tom and Bev Westheimer  
 Edward Westmeyer  
 Brent Wheeler and Kathryn Sweeney  
 Carol Whitbeck  
 Richard White  
 Charles K. Whitten and  
 Jonathan M. Gillentine  
 Lesley Wikoff and Robert Reynolds  
 Edmund and Barbara Wilkinson  
 Dr. Van Zandt Williams Jr. and  
 Mrs. Myra Williams  
 Nancy Willie-Schiff  
 Susan N. Wilson  
 Eleanor and Fred Winston  
 Kenneth and Sharon Winter

Joan Wolstenholme  
 Lynne and William Wood  
 The Workman Family  
 Lindsay Wright  
 Christopher Wurtele  
 Jery Wyatt  
 Philip and Carolyn Wyatt  
 Victor and Marie-Helene Yalom  
 Monona Yin and Steve Fahrer  
 Richard Yocum  
 Abbe Beth Young  
 Linda Young  
 Majid Zarrinkelk  
 Jeanne Zasadil  
 Gary and Linda Zellerbach  
 Greg and Susan Zoidis

The Legacy Circle honors donors who have included a gift for Compassion & Choices in their estate plans or through our charitable gift annuity program.

## Legacy Circle Members

Roberta Adlington	Susan Boughn	Cora Cronemeyer
Bert Davis and Nanci Albertson	Antoinette Bower	John Cross
Judith Amstutz and Sue Tyrone	Carole Bradfield*	Charles Curry
Ann B. Anderson	H. Leon and Hattie G. Bradlow	Audrey Curtis
Paul Anderson	Celia Brandt	Esther D. Curtwright
Anonymous (38)	Graal and Doris Braun	Nan Dale
The Anonymous Fund of M. C. F.	David Brodahl	Edith De Vincenzi
Linda Arden	Harvey Broodno	Mary DeBeer
Jan Corey Arnett	Sylvia Brown	Shulamit Decktor
Susan Arthur	Marilyn T. Bruno	Steve Denner
Virginia and Jerald Bachman	Terryl Buntrock	Ramon Dezutter
James Bajko	James Burger	Gloria Dintelman
Phyllis Balmat	Jeanne Burton*	Alison and Gerald Ditzen
Kathleen Bambeck	Kimberly Callinan and Earl Taylor II	Kerstin Doell in memory of Shirley Doell
Susan Barry	Natalie Bradley Campbell	Marie and Charles Donnel
Sandra Bartlett	Diane Cason Carlin	Loretta S. Downs
Burt Bassler	Fred Carr	Robert and Phoebe Drews
Jo Anne Baughan and Marlene Roeder	Ramona Carson	Donna Drinkwater
Tom Beaman	Regula Case	Freda Dunn
Terry Bean	Linda and Jerry Chambers	Carol Elkins
Stanley Beattie	Maxwell and Cynthia Chaplin	Fanita English
Gordon Bell	Ms. Elaine Charney	Tom and Elisabeth Everett
Owen Benthin	Robert Cheek	Alan Face
Leslie and Bill Biggs	Clair Cheer	Theresa Farrah
Patricia Bixby	Margaret Chrisman	Cynthia Faunce
Karen Bleuel	Sandra Lee Church	George and Elsa Fehrer
Elana Bluestone	Columbus Foundation	Norman Feld and Joni Epstein-Feld
Ronald Blum, Ph.D.	John Micetich and Grace Conlee-Micetich	Blair Fielding
Patricia Bobbing	Janet Conn and Michael Debelak	Kathryn Frankel
Carol Boerer	Gary Conrad*	Kyle Elizabeth Freeman
Carmen Bonilla	David Cook and Ann Thompson Cook	Valerie Friedman
Adelyn Bonin	Anne Cooke	Genia Friend
John* and Giselle Bonner	Joann Corey	Elaine Fung
Penny Borda	Edwin Corl	Warren Furman
	John Corwin	Ruth Galaid*
	Dr. George Crispo	Bernice Garnick
		Nina Garrett
		Douglas and Nancy Geisler
		Madeleine Gersh
		Jess Gersky
		Hugh Giblin

SYMBOL KEY

∞ Charitable gift annuity

\* Deceased

Elaine Gilbert	Ingrid Kloke	Thomas Nagy
Faye Girsh	Ray and Dana Koch	William Nettles
Phyllis Girvetz	David C. Korts	Richard Newman
Jill Godmilow	Judith Kramer	Gordon Nicholson
Marge Goldman	Barry Lamont	Sally Nunn
Anita and Murray Greenberg	Bernice Langner	Franklin Nussbaum
Doctors Norman C. and Gilda M. Greenberg	Jane Lanham	Gloria Nussbaum
Amy Griboff	Lawrence Louis LaPierre and Jane LaPierre	Robert Opsahl*
Doris Grieder	Sylvia Law	Jane Orans*
George Griffin	Penelope Lehman	Linda Ostreicher <sup>∞</sup>
Charles Gross	Nancy Leite	David E. Owens
Dan Grossman	Roger Leonard	Jean Owens
Joan Haberman	Lillian Lessler	Michael Pantaleoni
Rhyena Halpern <sup>∞</sup>	Marjorie Little	Elissa Parker
Tara Hands	Claire Liversidge	Harold Parker
James and Rita Harbert*	Joanne Lotreck	Margaret Parker
Janice Harman	Karen Love and Alexander Woronow	Roy Parks
Dorothy Harrigan	Stella Luftig	Kirsten Parrish
Kay and Phil Harry	Shirley Lynn	Jean Marilyn Parsons
Christine Hayes	Virginia Lyon	John and Gertrude Pedersen
Danell Hiltz	Walter and Marguerite Mahoney	Perry Peine
Sayako Hirose	Dorothy Marsh	Phyllis Persicketti
Robert Hodge	Sunny Martin	Craig Phillips
Deborah Hoffman	William E. Mastrocola and Earl L. Marble	Janet Phillips
Joyce Day Homan	Stephen May and Edward Casson	Linda Pierce
Constance Howard	Charlotte Mayerson	Kimberley Pittman-Schulz
Nancy and Bob Hoyt	Margot Mazeau	Miriam Pollack-Rehmar
Barbara Hruda	Virginia McArthur <sup>∞</sup>	William and Dolores Pollock
Jacqueline Hughes	Lanny McGrew <sup>∞</sup>	Sue Porter
Dr. George Hutchinson	Joan McLaughlin	Benjamin Blatt and Laurie Pross
Leigh Hutchinson	Timothy McNally	Rajendra Pruthi
Joseph Itiel	Jerome Medalie, Esq. and Ms. Beth Lowd	Robert Raben
Marilyn Janssen	The Purple Lady Fund/ Barbara J. Meislin	Marta Rapoport*
Edward Jervey	Chris Merlier	Debra Reed
Chris Jones	Patricia S. Merriman	Tom and Lana Reichert
Elliott Jones	Mickey Michaels	Dr. Susan Rice and Mr. Christopher Quint
Marlene and Thomas Joy	Pam Woodley and Perry Mitchell	Lianne Richland
Helene Kafka*	Pamela and Donald Moats	Madge Rieke
T.R. Kaiser	Robin Moler	Audrey Riffenburgh
William Kaplan	L. E. and A. C. R. Moore	Robert Ritterbusch*
Sharon Kapnick	Patricia and Arthur Moore	Marguerite Robbins
Gloria Karlson	Mary Moseley	James Rodell
Suzanne Keers		Richard Rogers
Earl Kendall		Sondra Roldan



Helen Roman  
 Davida Rosenblum  
 Linda and Eric Platt  
 Tracie Rowson  
 Marlene Rubins  
 Bruce Russell  
 Susan Safer  
 Deborah San Juan  
 Dianne Sanborn  
 Samantha B. and Mark J. Sandler  
 Elliott Schaffzin\*  
 Lyle Schauer  
 Lawrence Schlatter  
 Carol Schreter  
 Robert Schuermann  
 Schultz Family Revocable Trust  
 Nancy Schwarzwalder  
 Bruce and Doralie Segal  
 Rachel Sene  
 Clinton H. and Wilma T. Shattuck  
 Charitable Trust  
 Jerri Lea Shaw and  
 Raymond H. Johnson Jr.  
 Merri Lea Shaw and Bruce Carroll  
 Robert and Anne Shaw  
 Stephanie and James Sherman  
 Laura Shlien  
 Terry Singer and Terri Singleton  
 Naomi Slifkin  
 Darwin Smith

Elaine and John Smith  
 James and Doneen Smith  
 Dr. Sandra L. Snow  
 Dr. Mark E. Sobel<sup>∞</sup>  
 Karen and Kenneth Speck  
 Sondra Sprung  
 Joan Staple  
 Charles Stendig  
 Ralph Stephens<sup>∞</sup>  
 Rhoda and Edward Stern  
 Judy Stevens  
 Marcia Strean  
 Aleta Styers  
 Mary Swartz  
 Christine Taraskiewicz  
 Sharon Wasyluk Thompson  
 Mary Ann Travnik  
 Barbara J. Tucker  
 Jorge and Guadalupe Uribe  
 Mary Van Buren\*  
 Betsy Nimitz Van Dorn  
 Harriet Vitale  
 Jeff Volmerding  
 Jo Ann Wallace  
 Judith Wank  
 Barbara Warner  
 Pat and Russell Waterman  
 Vicky and Terry Webb  
 Arlene Weintraub  
 Nancy Wessel

Robert Westerdale  
 Ellen Westheimer  
 Jonathan Wexler  
 Daphne Whitman  
 Thomas R. and Vicki L. Williams  
 Dr. Van Zandt Williams Jr. and  
 Mrs. Myra Williams  
 Constance Willoughby  
 Dr. Michael C. Wolf<sup>∞</sup>  
 Beatrice A. Wolfe  
 Paul Wolfson and Neil Cohen  
 Ho Y. Wong  
 Anna Lou Wooldridge\*  
 Harrell and Carol Woolf  
 Peter and Barbara Wright  
 Barbara Young  
 Samuel Young  
 Gloria O'Quinn Zachari and  
 John Zachari  
 Joyce Zimmerman

## Stewarding Your Resources Efficiently and Effectively

Compassion & Choices is proud to be rated one of the most trusted, efficient, sustainable, accountable and transparent charities in the country.



## THANKING OUR PROFESSIONAL COLLEAGUES FOR DONATED SERVICES

Compassion & Choices thanks the law firms and their attorneys and staff that provided pro bono legal assistance and generously gave their time and expertise this year. Collectively, these law firms contributed thousands of hours of service valued at more than \$618,000 (July 1, 2019–June 30, 2020).

### Hanson Bridgett LLP

Adam Hoffman  
Josephine Mason Petrick

### Law Office of Jon B. Eisenberg

Jon B. Eisenberg

### Morgan Lewis

Jonathan M. Albano  
Nathaniel P. Bruhn

### O'Melveny

John Kappos  
Bo Moon  
Jason A. Orr  
Mark A. Hayden  
Meng Xu  
Amanda Hoffman (law clerk)  
Kristin Godfrey (support staff)  
Heide-Marie Bliss (support staff)  
John Paolo Dalog (support staff)

### Perkins Coie LLP

Rick Boardman  
Katie Page  
Alan Howard  
Evelyn Pang  
Emily Cooper

### Stoel Rives LLP

Emily Atmore  
Maggie Dalton



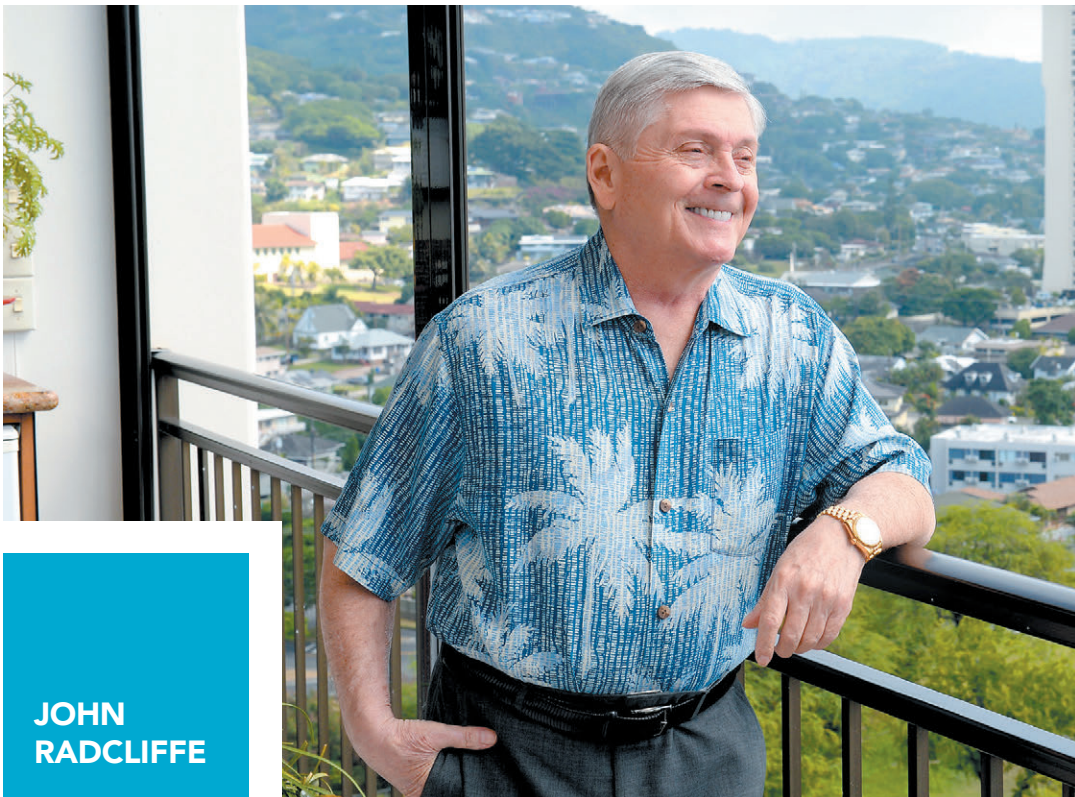
John Kappos and Bo Moon of O'Melveny with Compassion & Choices Chief Legal Advocacy Officer Kevin Díaz on the steps of the California Riverside Superior Court.

John Radcliffe, who lived with cancer for several years, worked side by side with Compassion & Choices to authorize, implement and improve the Hawai'i Our Care, Our Choice Act. John became the first person to publicly request a prescription under the new law and was able to use it to have a peaceful death.

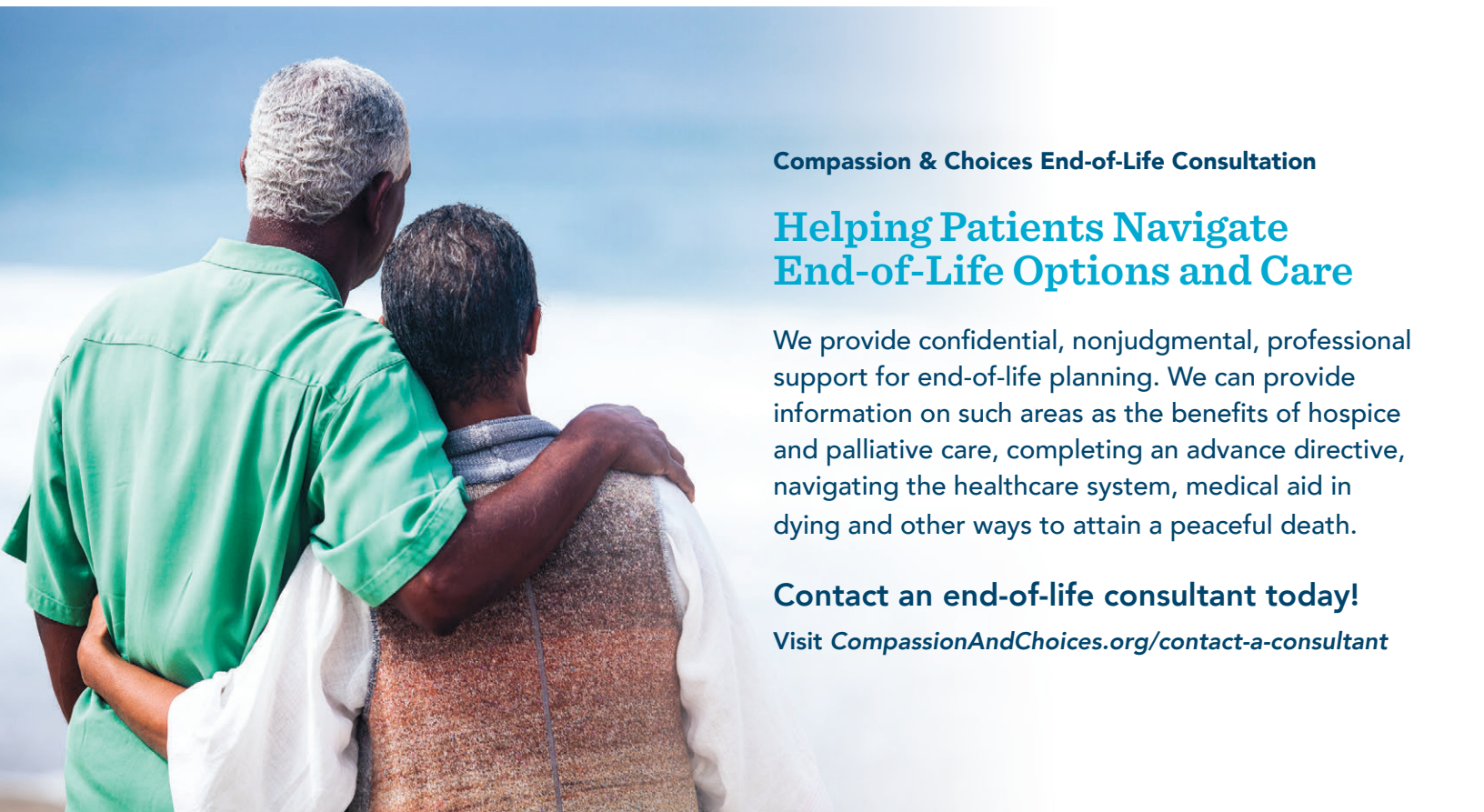


**“All of you folks at C&C are godsends for those of us that you have helped make life and death better. My heroes.”**

– John Radcliffe, June 26, 2020



**JOHN  
RADCLIFFE**



**Compassion & Choices End-of-Life Consultation**

**Helping Patients Navigate  
End-of-Life Options and Care**

We provide confidential, nonjudgmental, professional support for end-of-life planning. We can provide information on such areas as the benefits of hospice and palliative care, completing an advance directive, navigating the healthcare system, medical aid in dying and other ways to attain a peaceful death.

**Contact an end-of-life consultant today!**

Visit [CompassionAndChoices.org/contact-a-consultant](http://CompassionAndChoices.org/contact-a-consultant)